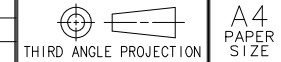
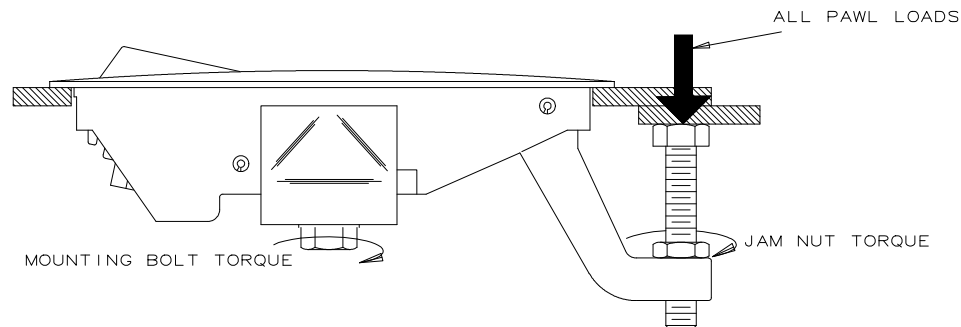


REV	DATE	DRAWN/CHKD	DESCRIPTION									
B	4MAY00	GDM	SEE RECORD PRINT									
C	09APR2002	GDM	UPDATE FORMAT									



SOUTHCO PERFORMANCE GUIDELINES

THE PERFORMANCE GUIDELINES SHOWN ON THIS PAGE ARE SUPPLIED AS A GENERAL GUIDE ONLY, AS CONDITIONS VARY WITH EACH APPLICATION AND METHOD OF INSTALLATION. STRENGTH DATA GIVEN IS FOR FAILURE OF THE PRODUCT OR FOR SUFFICIENT DEFORMATION TO MAKE PRODUCT INOPERABLE. NO SAFETY FACTOR HAS BEEN APPLIED. IT IS RECOMMENDED THAT THE USER REQUEST A PRODUCT SAMPLE FOR TESTING TO DETERMINE THE SUITABILITY OF THE PRODUCT FOR THE PURPOSE INTENDED AND USER'S PARTICULAR APPLICATION.



PART NUMBER	RECOMMENDED PAWL LOAD (FOR ACTUATION)	MAXIMUM RECOMMENDED PAWL LOAD (IN CLOSED POSITION)	ULTIMATE PAWL LOAD	MAXIMUM MOUNTING BOLT TORQUE	MAXIMUM JAM NUT TORQUE
C2-3X-XX	①	②	③	④	⑤
C2-99-217-1XX	200 N (45 lbf)	1100 N (250 lbf)	2000 N (450 lbf)	4.5 N·m (40 lbf·in)	7.3 N·m (65 lbf·in)

- ① RECOMMENDED PAWL LOAD (FOR ACTUATION) is the maximum force applied to the pawl which allows reasonable actuation forces for the user.
- ② MAXIMUM RECOMMENDED PAWL LOAD (IN CLOSED POSITION) is the maximum force that the product will withstand without affecting the operation or appearance of the product.
- ③ Average ULTIMATE PAWL LOAD causes failure of the product or sufficient deformation to make the product inoperable.
- ④ MAXIMUM MOUNTING BOLT TORQUE is the torque that stripped the head of the mounting screw.
- ⑤ MAXIMUM JAM NUT TORQUE is the torque that failed the internal threads in the pawl.