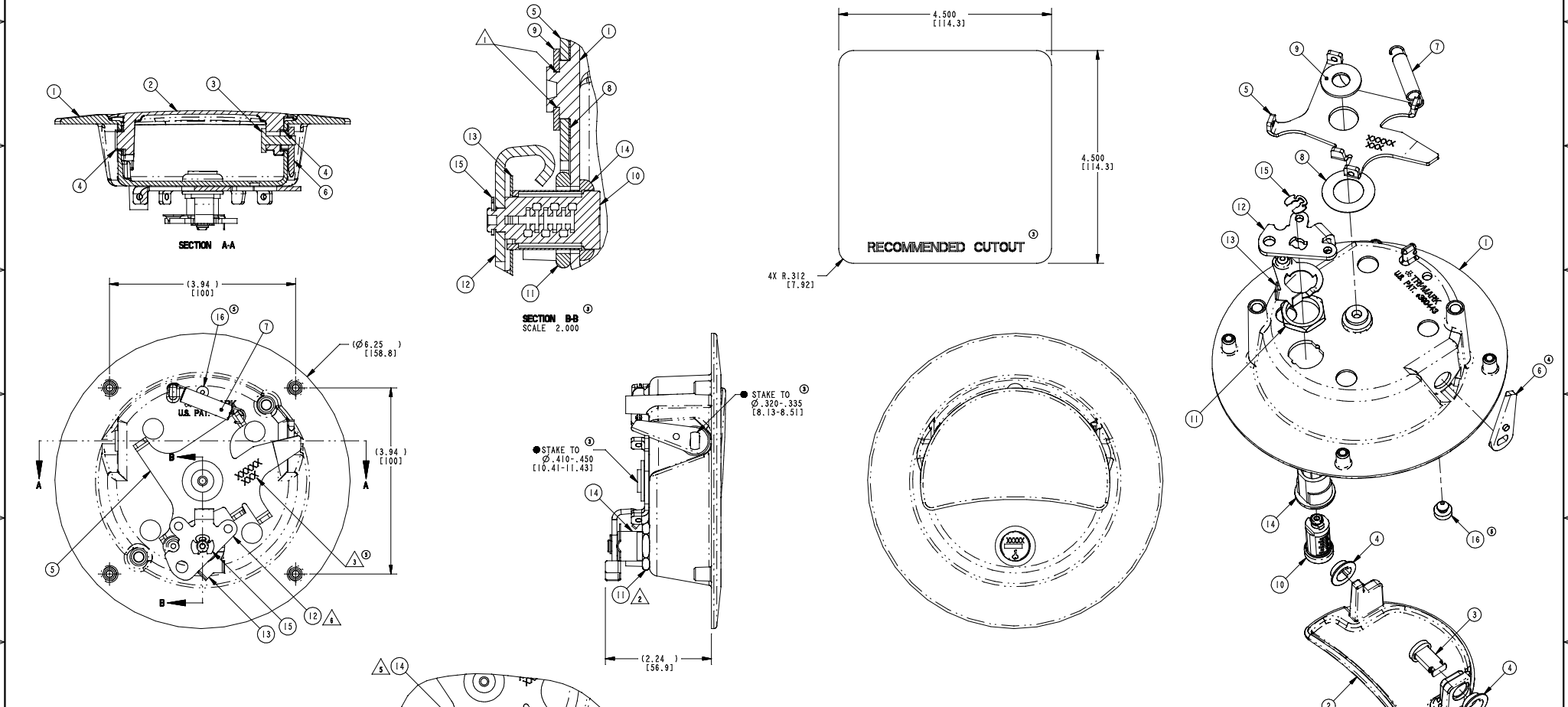


PART NUMBER DESCRIPTION	ITEM 1 HOUSING (QTY)	ITEM 2 PIVOT (QTY)	ITEM 3 AXLE (QTY)	ITEM 4 BUSHING (QTY)	ITEM 5 PLATE (QTY)	ITEM 6 ARM (QTY)	ITEM 7 SPRING (QTY)	ITEM 8 WASHER (QTY)	ITEM 9 WASHER (QTY)	ITEM 10 LOCKYLR (QTY)	ITEM 11 NUT (QTY)	ITEM 12 CAM (QTY)	ITEM 13 SPRING (QTY)	ITEM 14 ESCUTCHEON (QTY)	ITEM 15 RING (QTY)	ITEM 16 BUMPER (QTY)	FINISH	PART MARKING	
19381-01 030-1300_LGB_POWER LKG	14811-03 (1)	14813-01 (1)															N/A	PAINT, BLACK, LOW GLOSS	3
19381-02 030-1300_CNMC_POWER LKG	14811-04 (1)	14813-02 (1)	81475-16 (1)	13388-01 (2)	18842-01 (1)	14808-01 (1)	12902-01 (1)	81291-00 (1)	80651-15 (1)	14075-01 (1)	81618-16 (1)	19379-01 (1)	81702-39 (1)	13301-01 (1)	13861-01 (1)	80576-00 (1)	COAT, COPPER-NICKEL-NICKEL-CHROME	19381	
19381-04 030-1300_LGB_CNMC_POWER LKG	14811-03 (1)																N/A	HSS: PAINT, BLACK, LOW GLOSS PDL: COAT, COPPER-NICKEL-NICKEL-CHROME	

REVISION	DATE	BY	DESCRIPTION
4	06481	JPE	UPDATED VIEWS (ITEM 6).
5	25162	JPE	UPDATED VIEWS (ITEM 1, 16); PART NUMBER, PART MARKING, ITEM 16 (BUMPER), PART MARKING COLUMN.
6	29364	JPE	ITEM 14 (ESCUTCHEON); 13301-01 WAS 13311-01.



- NOTES: UNLESS OTHERWISE SPECIFIED:
- 1. APPLY ALPHA 2000 GREASE OR EQUIVALENT, BETWEEN THE HOUSING (ITEM 1) BOSS AND THE PIVOT PLATE (ITEM 5) HOLE.
 - 2. TORQUE NUT (ITEM 11) TO 30 IN-LBS MIN.
 - 3. STAMP WITH .125 HIGH CHARACTERS PER ES-121. LOCATE APPROXIMATELY AS SHOWN.
 - 4. FINISH IS FOR REFERENCE ONLY.
 - 5. ORIENTATION OF ESCUTCHEON (ITEM 14) IS CRITICAL
 - 6. SHIP IN UNLOCKED POSITION
 - 7. DIMENSIONS IN [] ARE MM FOR REFERENCE ONLY.

ESCUTCHEON ORIENTATION
LOCKCYLINDER (ITEM 10), NUT (ITEM 11), CAM (ITEM 12), DETENT SPRING (ITEM 13) AND RETENTION SPRING (ITEM 15) OMITTED FOR CLARITY

<p>1. INDICATES REVISIONS ASSEMBLY INFORMATION.</p> <p>2. THE 4X R.312 DIMENSION IS THE RECOMMENDED MINIMUM OF PART MARKING. SEE THE DIMENSIONAL APPLY METHOD COLUMN, FIG. 2-4.13</p>		<p>TriMark 500 DuPont Avenue P. O. Box 309 New Hampton, Iowa 50659 U.S.A. Tel: 401-394-5388 Fax: 401-394-5392</p>	
<p>UNLESS OTHERWISE SPECIFIED, ALL DIMENSIONS ARE IN MILLIMETERS.</p> <p>DATE: 7/14/02</p> <p>WORK: BULLINGTON</p> <p>X.Y. NO.: 1</p> <p>X.Y. NO.-2: 1</p> <p>X.Y. NO.-3: 1</p> <p>X.Y. NO.-4: 1</p> <p>X.Y. NO.-5: 1</p> <p>X.Y. NO.-6: 1</p> <p>X.Y. NO.-7: 1</p> <p>X.Y. NO.-8: 1</p> <p>X.Y. NO.-9: 1</p> <p>X.Y. NO.-10: 1</p> <p>X.Y. NO.-11: 1</p> <p>X.Y. NO.-12: 1</p> <p>X.Y. NO.-13: 1</p> <p>X.Y. NO.-14: 1</p> <p>X.Y. NO.-15: 1</p> <p>X.Y. NO.-16: 1</p> <p>X.Y. NO.-17: 1</p> <p>X.Y. NO.-18: 1</p> <p>X.Y. NO.-19: 1</p> <p>X.Y. NO.-20: 1</p> <p>X.Y. NO.-21: 1</p> <p>X.Y. NO.-22: 1</p> <p>X.Y. NO.-23: 1</p> <p>X.Y. NO.-24: 1</p> <p>X.Y. NO.-25: 1</p> <p>X.Y. NO.-26: 1</p> <p>X.Y. NO.-27: 1</p> <p>X.Y. NO.-28: 1</p> <p>X.Y. NO.-29: 1</p> <p>X.Y. NO.-30: 1</p> <p>X.Y. NO.-31: 1</p> <p>X.Y. NO.-32: 1</p> <p>X.Y. NO.-33: 1</p> <p>X.Y. NO.-34: 1</p> <p>X.Y. NO.-35: 1</p> <p>X.Y. NO.-36: 1</p> <p>X.Y. NO.-37: 1</p> <p>X.Y. NO.-38: 1</p> <p>X.Y. NO.-39: 1</p> <p>X.Y. NO.-40: 1</p> <p>X.Y. NO.-41: 1</p> <p>X.Y. NO.-42: 1</p> <p>X.Y. NO.-43: 1</p> <p>X.Y. NO.-44: 1</p> <p>X.Y. NO.-45: 1</p> <p>X.Y. NO.-46: 1</p> <p>X.Y. NO.-47: 1</p> <p>X.Y. NO.-48: 1</p> <p>X.Y. NO.-49: 1</p> <p>X.Y. NO.-50: 1</p>	<p>DESIGNED BY: KPE</p> <p>CHECKED BY: T.J.Z.</p> <p>DATE: 7/29/02</p> <p>DATE: 7/30/02</p> <p>PROJ. NO.: 02006</p> <p>PROJ. CODE: C29 (030-1300)</p> <p>CONTROLLER:</p>	<p>DATE: 7/29/02</p> <p>BY: KPE</p> <p>SCALE: 1.0</p> <p>PART NUMBER: 19381</p>	<p>SEE TABLE</p>