

NOTES:

- A. OPERATION: 195° TURN OF KNOB CAUSES PAWL TO ROTATE 75° THEN UNLATCH.
- B. PAWL, NUTS, AND LOCKWASHERS SHIPPED UNASSEMBLED IN BAG WITH LATCH ASSEMBLY.
- C. INSTALLATION:
 1. INSERT LATCH INTO HOLE IN DOOR. CHECK FOR PROPER ORIENTATION AND OPERATION OF PAWL.
 2. INSTALL USING LOCKWASHER AND MOUNTING NUT (27mm ACROSS FLATS). RECOMMENDED TIGHTENING TORQUE: 20 Nm.
 3. INSTALL JAM NUT, LOCKWASHER, PAWL, LOCKWASHER, AND JAM NUT ON SHAFT. ADJUST JAM NUTS TO POSITION PAWL AT CORRECT GRIP (WITH LATCH CLOSED). TIGHTEN JAM NUTS (18 Nm MAX. TORQUE) USING TWO 17mm WRENCHES.
 4. CAUTION: ADJUST PAWL SO THAT NO MORE THAN 7.9 Nm TORQUE ON KNOB IS REQUIRED TO CLOSE LATCH.
- D. CONTACT SOUTHCO FOR DETAILS ON ORDERING SEPARATE LOCK PLUGS.
- E. USED FOR ADDITIONAL KEY CODE LOCKS ABOVE FIRST KEY CODE, ADD THE THREE DIGIT KEY CODE TO THE END OF THE PART No. EXAMPLE: E3-158-15-002 IS FOR RK002 KEY CODE. CONTACT SOUTHCO FOR DETAILS.

southco

PROPRIETARY ITEM - EXCEPT FOR USES EXPRESSLY GRANTED IN WRITING INFORMATION DISCLOSED HEREON IS CONFIDENTIAL AND ALL RIGHTS PATENT AND OTHERWISE ARE RESERVED BY SOUTHCO, INC.

WISE-ACTION LATCH-INTERNATIONAL SERIES- KEY LOCKING AND NON LOCKING WING KNOB

DATE	DRAWN	CHKD	SCALE	DRAWING NUMBER
19JUL2004	AAB		1:1	J-E3-11-2

ASSEMBLY PART NUMBER (PAWL TYPE)	GRIP RANGE	PAWL POSITION	PAWL OFFSET
E3-WXX-1Z	11.4 - 27.2	FORWARD	27.4
	66.3 - 76.2	REVERSED	
E3-WXX-2Z	25.4 - 41.1	FORWARD	13.7
	52.6 - 68.3	REVERSED	
E3-WXX-3Z	38.9 - 54.6	STRAIGHT	NONE

REV	DATE	DRAWN/CHKD	DESCRIPTION

MILLIMETERS

ALL DIMENSIONS WITHOUT TOLERANCES ARE FOR REFERENCE ONLY.

THIRD ANGLE PROJECTION

B PAPER SIZE

KNOB STYLES (AND KEY CODES)

- 50 = NON LOCKING
- 51 = LOCKING (CH751)
- 52 = LOCKING (LS001-125)
- 53 = LOCKING (LS126-250)
- 54 = LOCKING (LS251-375)
- 55 = LOCKING (LS376-500)
- 56 = LOCKING (HL450)
- 57 = LOCKING (14603)
- 58 = SHUTTERED, REVERSIBLE (RK001)
- 59 = WITHOUT LOCK PLUG (NOTE D) (CUSTOMER INSTALLED)

MOUNTING STYLE

- 1 - TYPE A (TURN CLOCKWISE TO LATCH).
- 2 - TYPE B (TURN COUNTERCLOCKWISE TO LATCH).

FINISH TABLE

- 3 - FURNITURE WHITE POWDER COAT
- 4 - CARDINAL WHITE POWDER COAT
- 5 - BLACK POWDER COAT
- 6 - LIGHT GREY POWDER COAT
- 7 - SATIN SILVER POLYESTER POWDER COAT
- 8 - SILVER METALLIC URETHANE POWDER COAT
- 9 - LUCENT GREY POWDER COAT

KEY CODE OPTION (NOTE E)

- 002 - 2nd KEY CODE
- 003 - 3rd KEY CODE
- 004 - 4th KEY CODE

999 - 999th KEY CODE

COMPONENT	MATERIAL	FINISH
HOUSING	DIE CAST ZINC	SEE FINISH TABLE
KNOB	DIE CAST ZINC	SEE FINISH TABLE
LOCK PLUG	DIE CAST ZINC AND BRASS	SEE FINISH TABLE
RETAINER	302 STAINLESS STEEL	NATURAL
SPRING	302 STAINLESS STEEL	NATURAL
O-RING	BUNA-N	NATURAL
SLEEVE	1075 STEEL	DACROSEALDT
CAM	1075 STEEL	DACROSEALDT
SHAFT	LOW CARBON STEEL	ZINC PLATE CHROMATE, PLUS SEALER
PIN	1008 STEEL	ZINC PLATE CHROMATE YELLOW
PAWL	1010 STEEL	ZINC PLATE CHROMATE, PLUS SEALER
JAM NUTS (2)	LOW CARBON STEEL	ZINC PLATE CHROMATE, PLUS SEALER
LOCKWASHERS (2)	SPRING STEEL	ZINC PLATE CHROMATE, PLUS SEALER
MOUNTING NUT	DIE CAST ZINC	ZINC PLATE BRIGHT CHROMATE
MOUNTING LOCKWASHER	SPRING STEEL	ZINC PLATE CHROMATE, PLUS SEALER
KEYS (2)	BRASS	NICKEL PLATED

ASSEMBLY PART NO.

E3- W XX - Y Z - FFF

MTG. STYLE KNOB STYLE PAWL TYPE FINISH KEY CODE OPTION

SUBASSEMBLY PART NO.

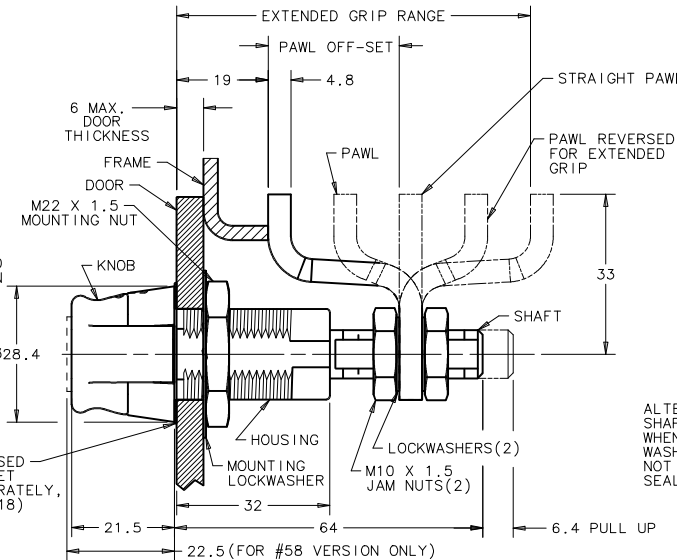
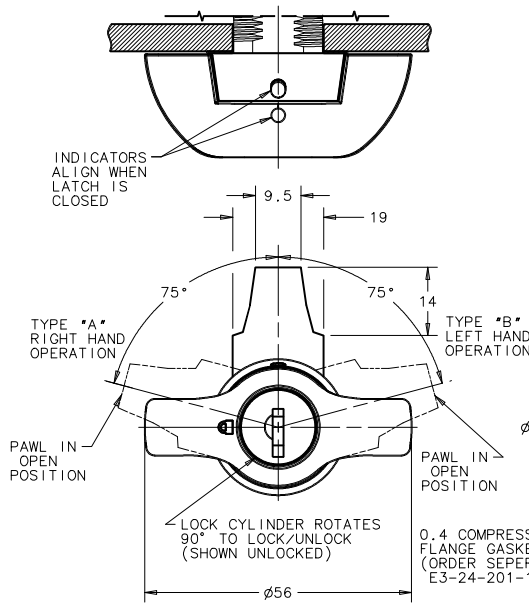
E3- W XX - 0 Z - FFF

MTG. STYLE KNOB STYLE FINISH KEY CODE OPTION

HARDWARE PKG. PART NO.

E3- W 0 - Y - 1

MTG. STYLE PAWL TYPE



DOOR PREPARATION

METHOD A

METHOD B

(NOT RECOMMENDED FOR GASKETED APPLICATIONS)

