

southco PROPRIETARY ITEM - EXCEPT FOR USES EXPRESSLY GRANTED IN WRITING INFORMATION DISCLOSED HEREON IS CONFIDENTIAL AND ALL RIGHTS, PATENT AND OTHERWISE ARE RESERVED BY SOUTHCO, INC.

REV	DATE	DRAWN/CHKD	DESCRIPTION
H	01MAY2003	VN1/MJS	PRN: P2003-0339
I	19JUN2003	RLR/MJS	PRN: P2003-0504
J	13AUG2004	VN1/RLR	PRN: P2004-0893
K	09NOV2004	MDY/RLR	PRN: P2004-1308
L	06SEP2005	MDY/RLR	PRN: P2005-1167
M	23SEP2011	MJS/DM	PRN: P2011-0647

C2 LEVER LATCH ASSEMBLY WITH LOCKING RAISED LEVER

DRAWING NUMBER: J-C2-33-2
SCALE: 1:1
DATE: 24FEB93
DRAWN: JGK
CHKD:

MILLIMETERS

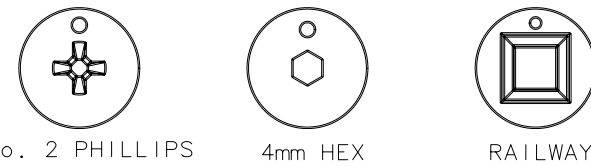
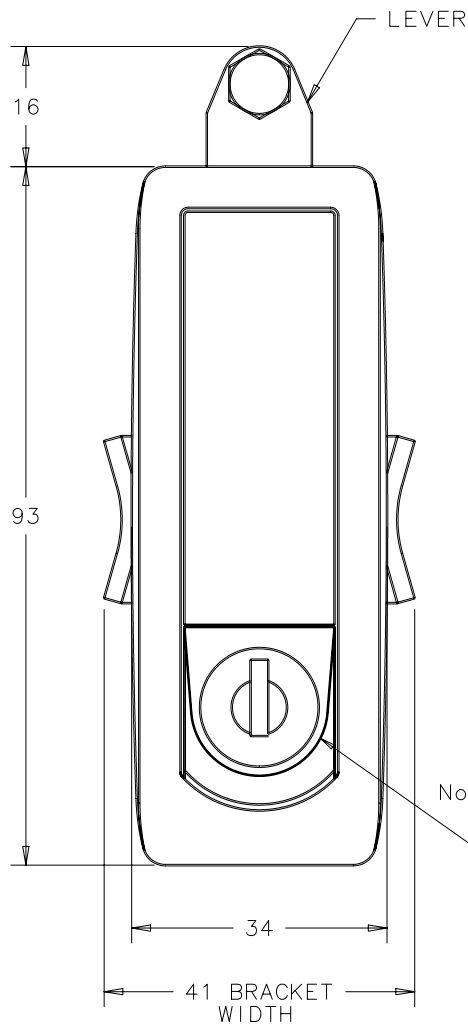
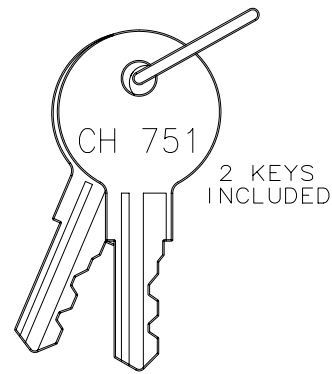
ALL DIMENSIONS WITHOUT TOLERANCES ARE FOR REFERENCE ONLY.

A3 PAPER SIZE
THIRD ANGLE PROJECTION

	BLACK POWDER COATED	TEXTURED CHROME FINISH	SILVER POLYESTER POWDER COATED	CARDINAL WHITE POWDER COATED	LIGHT GRAY POWDER COATED	SILVER METALLIC POWDER COATED	FURNITURE WHITE POWDER COATED
KEY LOCKING	C2-33-25	C2-33-21	C2-33-27	C2-33-24	C2-33-26	C2-33-28	C2-33-29
4mm HEX RECESS	C2-33-45	C2-33-41	C2-33-47	C2-33-44	C2-33-46	C2-33-48	C2-33-49
No. 2 PHILLIPS	C2-33-105	C2-33-101	C2-33-107	C2-33-104	C2-33-106	C2-33-108	C2-33-109
WITHOUT LOCK PLUG	C2-33-135	C2-33-131	C2-33-137	C2-33-134	C2-33-136	C2-33-138	C2-33-139
RAILWAY	C2-33-145	C2-33-141	C2-33-147	C2-33-144	C2-33-146	C2-33-148	C2-33-149

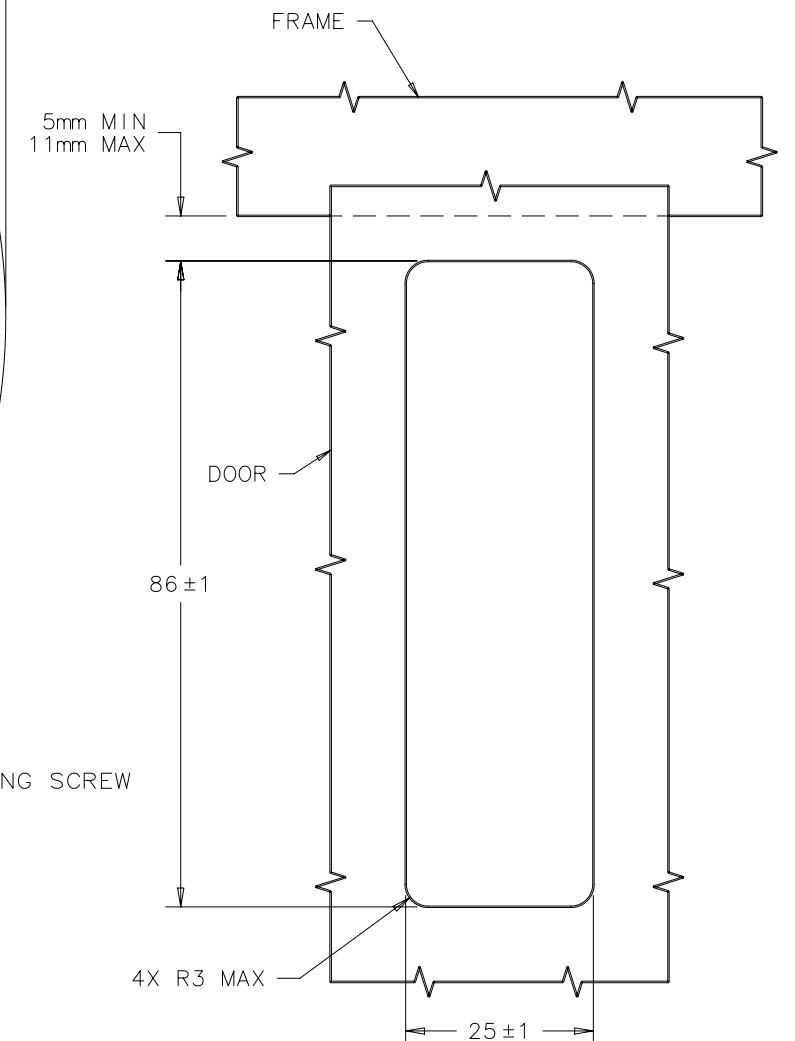
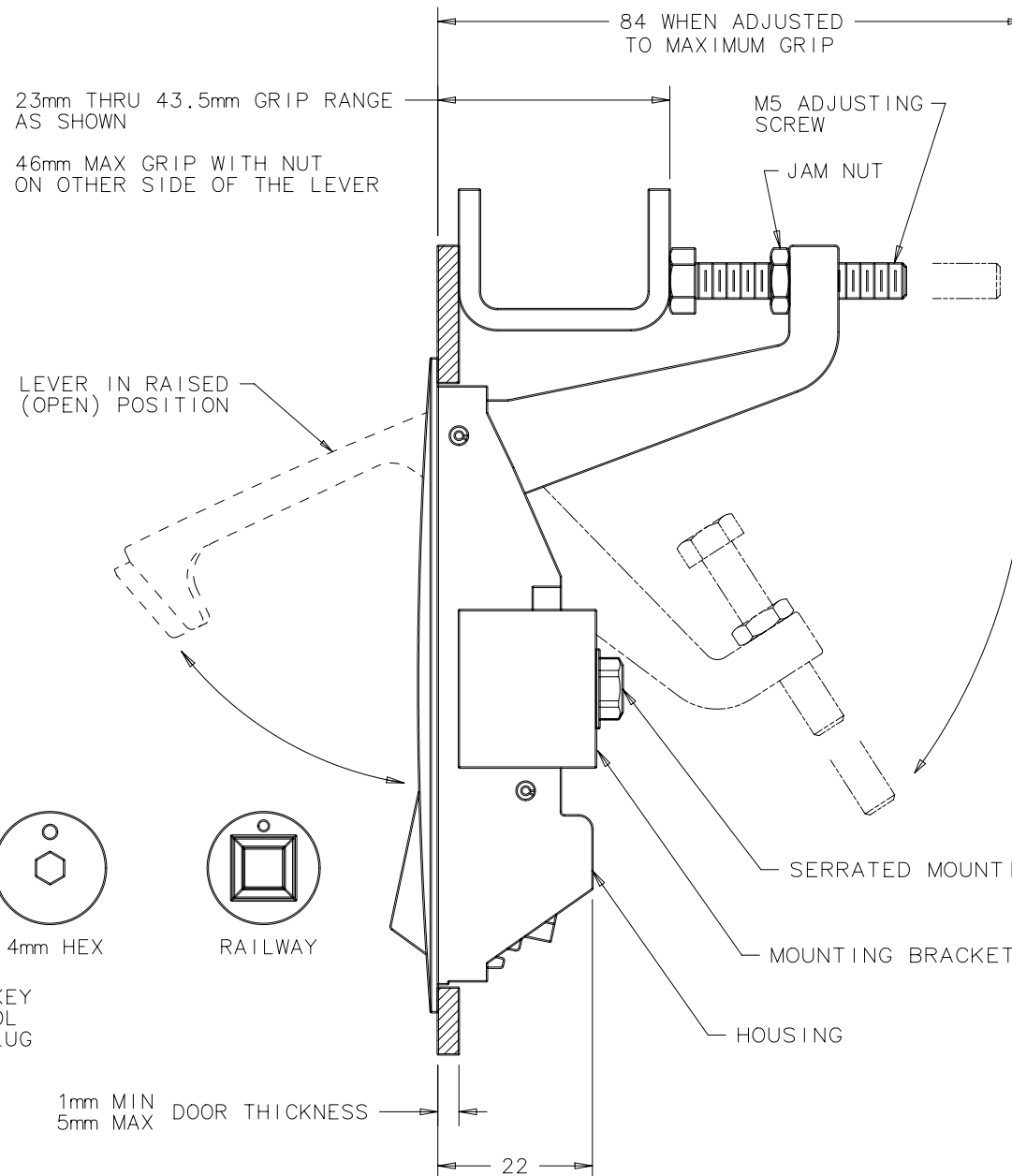
NOTES:

- A. MATERIAL AND FINISH
- HOUSING, LEVER, LOCK PLUG AND TRIGGER: DIE CAST ZINC, SEE ASSEMBLY PART NUMBER TABLE.
 - U-SPRING: 302 STAINLESS STEEL, PASSIVATED.
 - TORSION SPRING: 302 STAINLESS STEEL, NATURAL.
 - SPIROL PIN: SAE 51420, NATURAL
 - LOCKWASHER: SPRING STEEL, ZINC ALLOY PLATE BRIGHT PLUS SEALER.
 - SCREWS AND HEX NUT: LOW CARBON STEEL, ZINC ALLOY PLATE BRIGHT PLUS SEALER.
 - BRACKET: 1010 STEEL, ZINC ALLOY PLATE BRIGHT PLUS SEALER.
 - KEYS: BRASS, NICKEL PLATED.
- B. MOUNTING SCREW ASSEMBLY CONSISTS OF: M5 SCREW WITH LOCKWASHER. USE LONGER SCREWS (NOT SUPPLIED) FOR THICKER DOORS.
- C. LOCKPLUG INSTALLATION:
- POSITION LOCKPLUG AND ORIENT RETAINING WAFER (LAST WAFER LOCATED AT THE BOTTOM OF LOCK) AT THE 3 O'CLOCK POSITION AND INSERT INTO THE TRIGGER.
 - BE SURE THE LOCKPLUG IS FULLY SEATED AGAINST THE TRIGGER, THEN REMOVE KEY.



TRIGGER WITH KEY LOCKING OR TOOL ACCESS LOCK PLUG

1mm MIN
5mm MAX DOOR THICKNESS



PANEL PREPARATION