

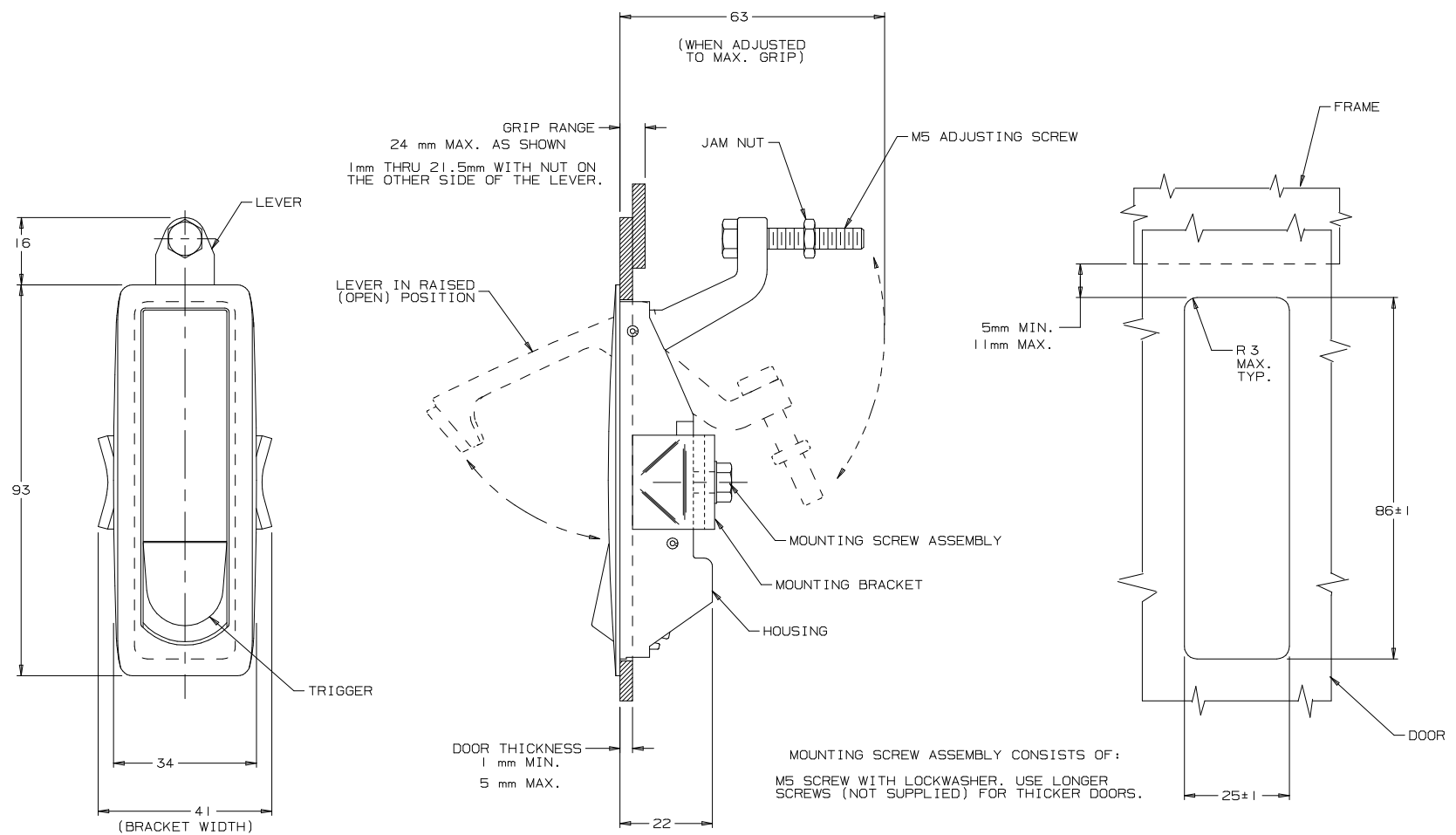
REV.	DATE	BY-CHKD	REVISIONS
A	14 MAR 94	JAD	PRN: C2-84
B	14 DEC 95	CHW	ADDED PART NUMBER "C2-32-17"
C	11 OCT 96	SWD	PRN: S-93-23
D	23 FEB 99	JDK-CHW	PRN: C2-139

ASSEMBLY PART NUMBER TABLE		
BLACK POWDER COATED	TEXTURED CHROME FINISH	SILVER POLYESTER POWDER COATED
C2-32-15	C2-32-11	C2-32-17

MATERIAL AND FINISH

LATCH ASSEMBLY CONSISTS OF:

HOUSING, LEVER, AND TRIGGER: DIE CAST ZINC, SEE ASSEMBLY PART NUMBER TABLE.
 SPRINGS: 302 STAINLESS STEEL, PASSIVATED.
 ROLL PINS: 420 STAINLESS STEEL, PASSIVATED.
 LOCKWASHER: SPRING STEEL, ZINC ALLOY PLATE BRIGHT, PLUS SEALER.
 SCREWS AND HEX NUT: LOW CARBON STEEL, ZINC ALLOY PLATE BRIGHT, PLUS SEALER.
 BRACKET: 1010 STEEL, ZINC ALLOY PLATE BRIGHT, PLUS SEALER.



THIRD ANGLE PROJECTION. ALL DIMENSIONS ARE IN MILLIMETERS.
 PROPRIETARY ITEM - EXCEPT FOR USES EXPRESSLY GRANTED IN WRITING INFORMATION DISCLOSED HEREON IS CONFIDENTIAL AND ALL RIGHTS PATENT AND OTHERWISE ARE RESERVED BY SOUTHCO, INC.
 FORMAT 2/88