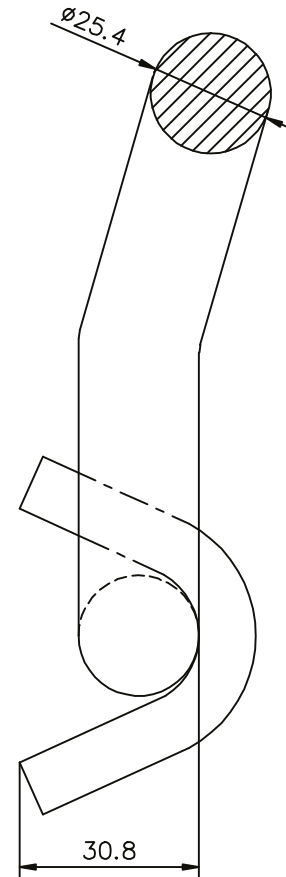
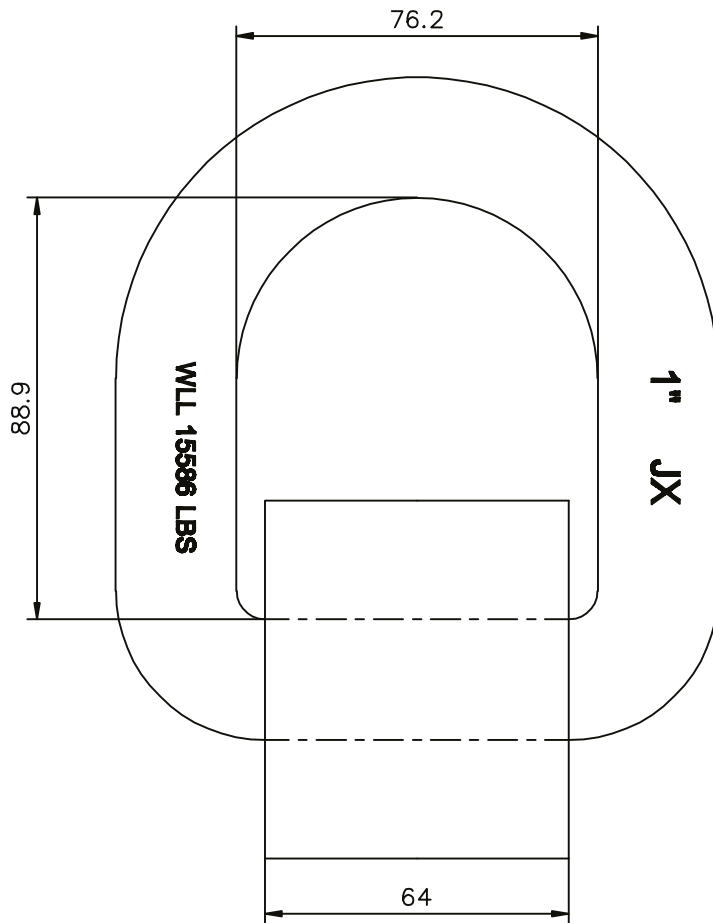


TECHNICAL DRAWING / DESSIN TECHNIQUE



JIMEXS
HARDWARE

1 866 447-5656 / INFO@JIMEXS.COM

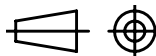
WWW.JIMEXS-HARDWARE.COM

410-213

Anneau d'arrimage courbée en D,
 Montage par soudure
 Bent lashing D-ring, Weld-on mounting

2022-01-27

PROJECTIONS



DIMENSIONS

3-5/8" x 3"

MATERIAL / MATÉRIEL Acier brut / Plain steel

SPECS

WLL : 15586 lb, BS : 46760 lb