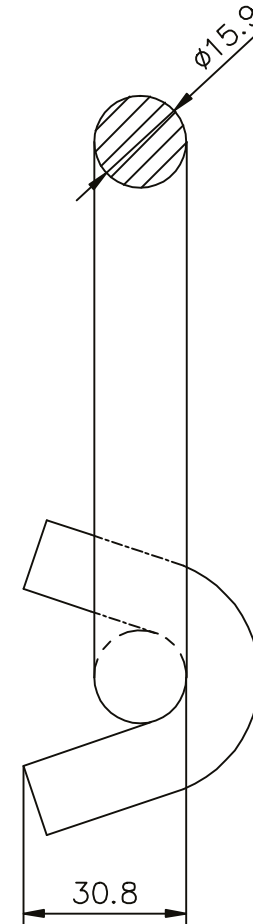
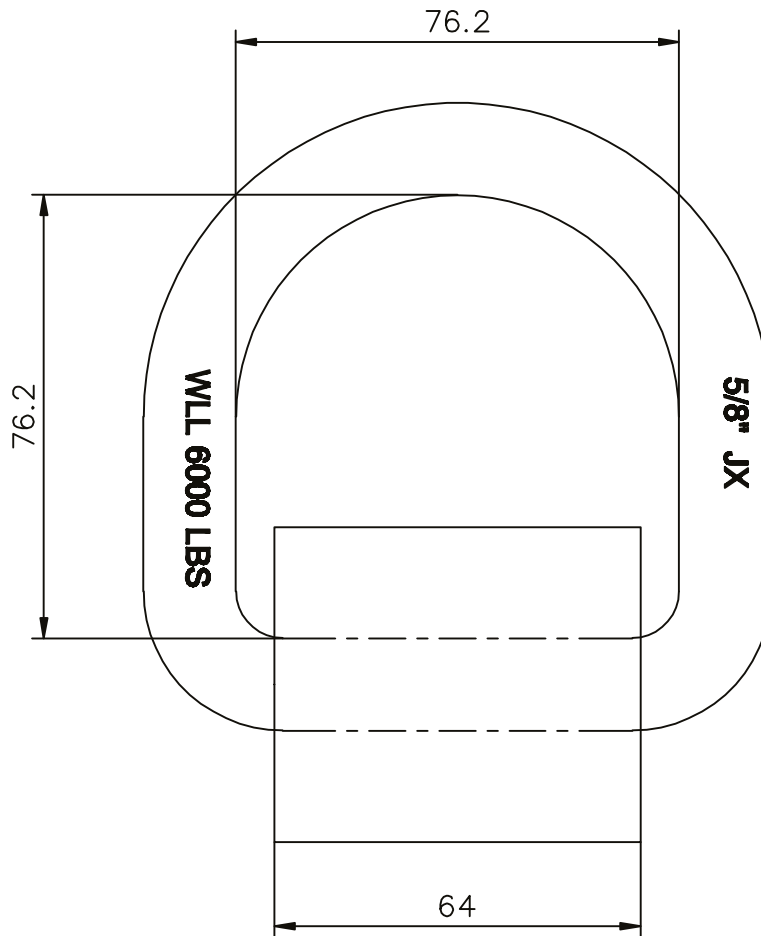


TECHNICAL DRAWING / DESSIN TECHNIQUE



JIMEXS
HARDWARE

1 866 447-5656 / INFO@JIMEXS.COM

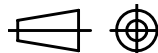
WWW.JIMEXS-HARDWARE.COM

410-205

Anneau d'arrimage en D, Montage par soudure
 Lashing D-ring, Weld-on mounting

2022-01-27

PROJECTIONS



DIMENSIONS

4-1/4" x 4-1/4"

MATERIAL / MATÉRIEL Acier brut / Plain steel

SPECS

WLL : 6000 lb, BS : 18000 lb