

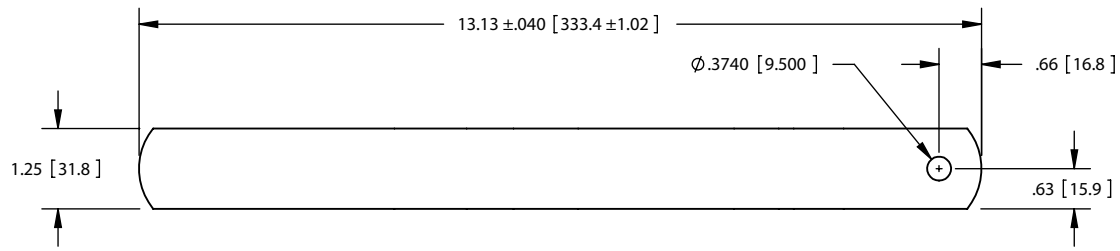
ASSEMBLED VIEW

NOTES:

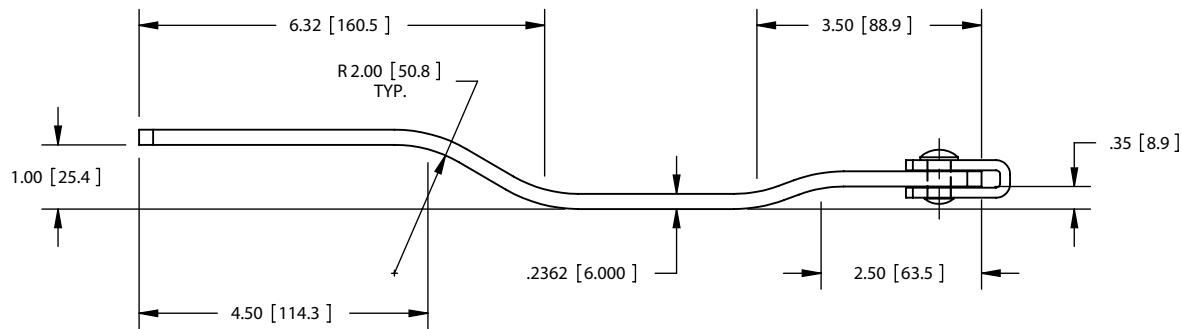
- 1. ALL COMPONENTS ARE TO BE BLUE ZINC PLATED BEFORE HINGE IS ASSEMBLED.
- 2. EACH END MUST BE CRIMPED ON BOTTOM SIDE TO RETAIN PIN IN PLACE. CRIMPED ENDS MUST BE TOUCHED UP WITH SILVER PAINT.

NUMERO DE PIÈCE/PART NUMBER		DESCRIPTION		
222-451		Serrure à charnière / Dead bolt lock		
DESSIN PAR/DRAWING BY		MATÉRIEL/MATERIAL	FINI/FINISH	
Jimexs		Acier / Steel	Zingué / Zinc Plated	
JIMEXS.COM / INFO@JIMEXS.COM		DATE	FEUILLE/SHEET	ÉCHELLE/SCALE
		2013-06-12	1/1	NAE
				PROJECTIONS

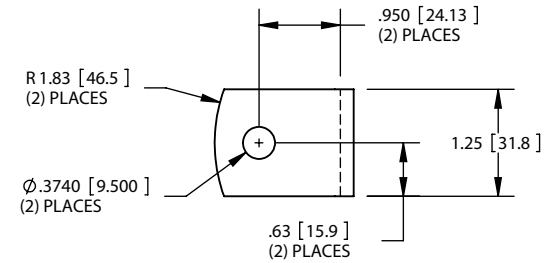




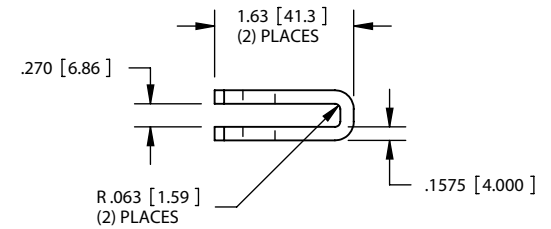
TOP VIEW
SHOWN WITHOUT WELD
BRACKET FOR CLARITY



FRONT VIEW



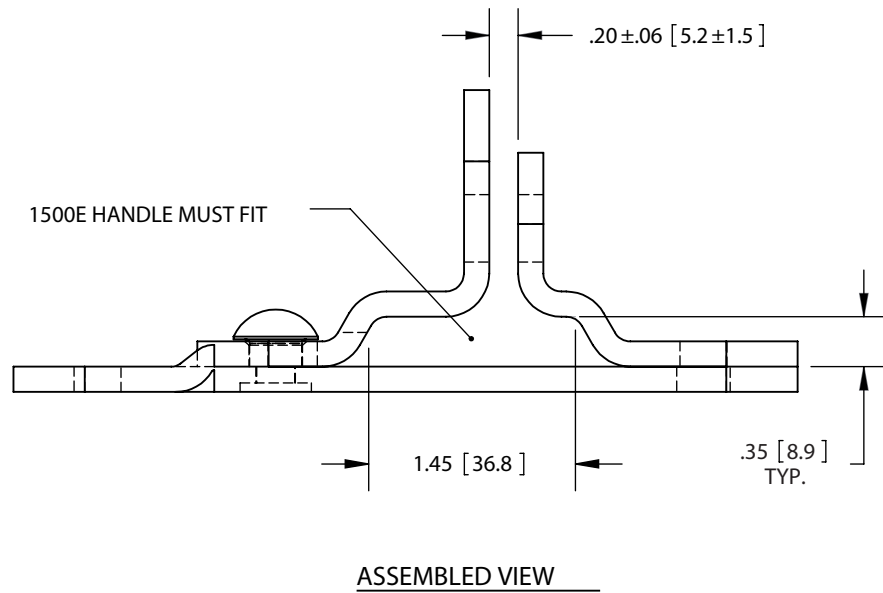
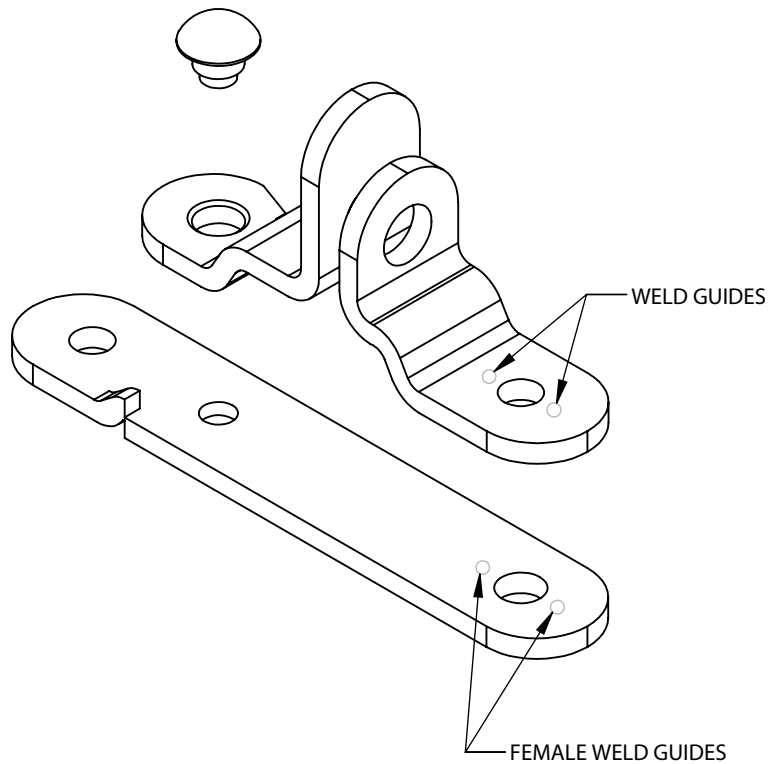
TOP VIEW



FRONT VIEW

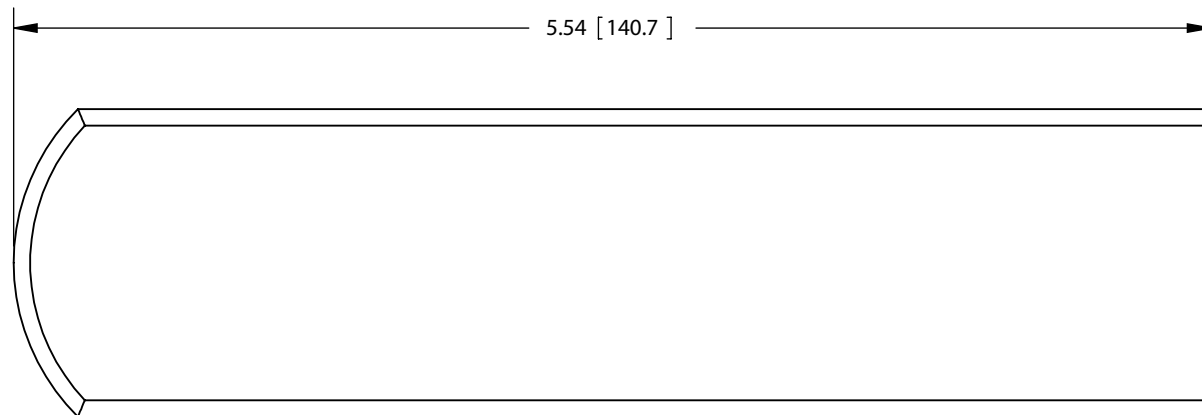
NUMERO DE PIÈCE/PART NUMBER		DESCRIPTION		
222-451		Serrure à charnière / Dead bolt lock		
DESSIN PAR/DRAWING BY		MATÉRIEL/MATERIAL	FINI/FINISH	
Jimexs		Acier / Steel	Zingué / Zinc Plated	
JIMEXS.COM / INFO@JIMEXS.COM		DATE	FEUILLE/SHEET	ÉCHELLE/SCALE
		2013-06-12	1/1	NAE
				PROJECTIONS



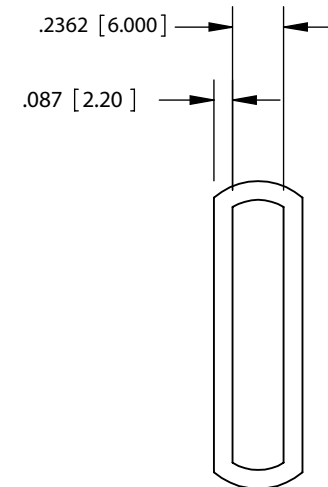


NUMERO DE PIÈCE/PART NUMBER		DESCRIPTION		
222-451		Serrure à charnière / Dead bolt lock		
DESSIN PAR/DRAWING BY		MATÉRIEL/MATERIAL	FINI/FINISH	
Jimexs		Acier / Steel	Zingué / Zinc Plated	
JIMEXS.COM / INFO@JIMEXS.COM		DATE	FEUILLE/SHEET	ÉCHELLE/SCALE
		2013-06-12	1/1	NAE
				PROJECTIONS





FRONT VIEW



RIGHT SIDE VIEW

NUMERO DE PIÈCE/PART NUMBER		DESCRIPTION		
222-451		Serrure à charnière / Dead bolt lock		
DESSIN PAR/DRAWING BY		MATÉRIEL/MATERIAL	FINI/FINISH	
Jimexs		Acier / Steel	Zingué / Zinc Plated	
JIMEXS.COM / INFO@JIMEXS.COM		DATE	FEUILLE/SHEET	ÉCHELLE/SCALE
		2013-06-12	1/1	NAE
			PROJECTIONS	

