

JIMEXS

CARGO



CARGO CONTROL PRODUCTS
CATALOG 252

SALES CONDITIONS

MINIMUM ORDER

\$50.00 minimum order, if not an extra **\$5.00** handling fee will be added to your invoice.

SHIPPING CONDITIONS

F.O.B. our warehouse.

MERCHANDISE RETURN

All merchandise returns must first be approved by our inside sales staff and must have a **Return Merchandise Authorisation number (RMA)** before they are sent back. Products must be in their original packaging.

All returns will be inspected by Jimexs inc. before issuing a credit. Note a minimum of 20% re-stocking charge will be applied.

LIMITED WARRANTY

The responsibility of Jimexs Inc. is limited by the warranty offered by our suppliers. Jimexs is not responsible for the direct or indirect damages and the cost of labour involved in a replacement of its products. This limited warranty is the only one given by Jimexs Inc.

The products sold are not subject to any representation or warranty by Jimexs Inc. as to the utility of its use. The warranty does not apply when the product is broken or in case of water infiltration.

If the merchandise received is damaged or incomplete, a notice of claim should be received within 30 days following the receipt of the merchandise. If there is no notice of claim respecting the delays, the claim is not admissible.

In the event where the information in using or the installation of a product is insufficient or nonexistent, it's the customer's responsibility to get all the useful or necessary information from Jimexs.

No representative of Jimexs Inc. is authorized to do any representation or to give any warranty whatsoever or assume that Jimexs is responsible for the products seen in this catalogue.

PAYMENT TERM

PAYMENT TERM

Net, 30 days (upon credit approval)

OPENING ACCOUNT

A request to open an account can be done by sending a request to our Customer Service only when there is a minimum buying potential of \$2500 per year and the cumulated purchases of current year are equivalent or higher than \$1000. The credit limit will be establish by your company's credit and your buying potential.

UTILITY STRAPS **4**

1" Straps
2" Straps
Ratchets

WINCH STRAPS **6**

2", 3" & 4" Winch Straps

WINCHES **7**

Sliding Winches

WINCH ACCESSORIES **8**

Tracks
Bars
Corner Protectors

STRAPS & TIE OFFS **10**

Logistic Straps
Rope Tie Offs

TRACKS & BARS **11**

Logistic Tracks
Decking Beams
Shoring Bars

CHAINS **12**

Buckets and Barrels
Assemblies with Hooks
Chain Binders

HOOKS **13**

Clevis Hooks
Slipping Hooks
Slipping Hooks with Latch

TIE DOWNS **14**

Bolt-on Tie Downs
Weld-on Tie Downs

SCREW PIN SHACKLES **16**

Non-Rated Screw Pin Shackles
Rated Screw Pin Shackles

LINKS **18**

Quick Links
Lap Links

HARDWARE **19**

Footman Loops
Hooks
Tarp Ties

1" STRAPS



452-141

452-141

DIMENSIONS: 6'
FIXED PART: 9-1/8"
DETAILS: Buckle
FITTINGS: Vinyl coated hooks
MATERIALS: Polyester and steel
WORKING LOAD LIMIT: 400 lb
BREAKING STRENGTH: 1 200 lb



452-131

452-131

DIMENSIONS: 9'
FIXED PART: 26-1/4"
DETAILS: Ratchet
FITTINGS: Vinyl coated hooks
MATERIALS: Polyester and steel
WORKING LOAD LIMIT: 833 lb
BREAKING STRENGTH: 2 500 lb



452-161

452-161

DIMENSIONS: 13'
FIXED PART: 9-1/8"
DETAILS: Buckle
FITTINGS: Narrow wire hooks
MATERIALS: Polyester and steel
WORKING LOAD LIMIT: 400 lb
BREAKING STRENGTH: 1 200 lb



452-101

452-101

DIMENSIONS: 13'
FIXED PART: 24-1/4"
DETAILS: Ratchet
FITTINGS: Narrow wire hooks
MATERIALS: Polyester and steel
WORKING LOAD LIMIT: 167 lb
BREAKING STRENGTH: 500 lb



452-123

452-123

DIMENSIONS: 16'
FIXED PART: 24-1/4"
DETAILS: Ratchet
FITTINGS: Narrow wire hooks
MATERIALS: Polyester and steel
WORKING LOAD LIMIT: 833 lb
BREAKING STRENGTH: 2 500 lb



452-113

452-113

DIMENSIONS: 16'
FIXED PART: 24-1/4"
DETAILS: Ratchet and D-rings
FITTINGS: Narrow wire hooks
MATERIALS: Polyester and steel
WORKING LOAD LIMIT: 833 lb
BREAKING STRENGTH: 2 500 lb

2" STRAPS

450-551

DIMENSIONS: 27'

FIXED PART: 14-3/8"

DETAILS: Wide handle ratchet

FITTINGS: Narrow wire hooks

MATERIALS: Polyester and steel

WORKING LOAD LIMIT: 3 333 lb

BREAKING STRENGTH: 10 000 lb



450-551

450-561

DIMENSIONS: 30'

FIXED PART: 14-1/8"

DETAILS: Wide handle ratchet

FITTINGS: Narrow wire hooks

MATERIALS: Polyester and steel

WORKING LOAD LIMIT: 3 333 lb

BREAKING STRENGTH: 10 000 lb



450-561

RATCHETS

451-141

DIMENSIONS: 6.54" x 3.15" x 2.26"

DETAILS: Ratchet for 2" strap

HANDLE: Standard

MATERIALS: Gold zinc plated steel

WORKING LOAD LIMIT: 3 665 lb

BREAKING STRENGTH: 11 000 lb



451-141

451-151

DIMENSIONS: 8.94" x 4.25" x 2.31"

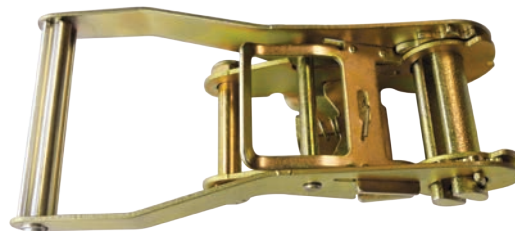
DETAILS: Ratchet for 2" strap

HANDLE: Wide

MATERIALS: Gold zinc plated steel

WORKING LOAD LIMIT: 3 665 lb

BREAKING STRENGTH: 11 000 lb



451-151

WINCH STRAPS



2" / 3" / 4" WINCH STRAPS



450-111

450-111

DIMENSIONS: 2" x 30'

FITTINGS: Narrow wire hooks

MATERIALS: Polyester and forged steel

WORKING LOAD LIMIT: 3 333 lb

BREAKING STRENGTH: 5 000 lb



450-141

450-141

DIMENSIONS: 3" x 30'

FITTING: Flat hook

MATERIALS: Polyester and forged steel

WORKING LOAD LIMIT: 5 400 lb

BREAKING STRENGTH: 16 200 lb



450-161

450-161

DIMENSIONS: 3" x 30'

DETAILS: G43 chain 18-7/8" long

FITTING: 3/8" hook, G70

MATERIALS: Polyester and gold zinc plated forged steel

WORKING LOAD LIMIT: 5 400 lb

BREAKING STRENGTH: 16 200 lb



450-261

450-261

Ultra-resistant

DIMENSIONS: 3" x 30'

DETAILS: G43 chain 18-7/8" long

FITTING: 3/8" hook, G70

MATERIALS: Abrasion resistant polyester and gold zinc plated forged steel

WORKING LOAD LIMIT: 5 400 lb

BREAKING STRENGTH: 16 200 lb



450-143

450-143

DIMENSIONS: 4" x 30'

FITTING: Flat hook

MATERIALS: Polyester and forged steel

WORKING LOAD LIMIT: 5 400 lb

BREAKING STRENGTH: 16 200 lb



450-163

450-163

DIMENSIONS: 4" x 30'

DETAILS: G43 chain 18-7/8" long

FITTING: 3/8" hook, G70

MATERIALS: Polyester and gold zinc plated forged steel

WORKING LOAD LIMIT: 5 400 lb

BREAKING STRENGTH: 16 200 lb

SLIDING WINCHES

455-123

MATERIALS: Steel, black paint
WORKING LOAD LIMIT: 6 000 lb
BREAKING STRENGTH: 18 000 lb

455-123



455-124

MATERIALS: Galvanized steel
WORKING LOAD LIMIT: 6 000 lb
BREAKING STRENGTH: 18 000 lb

455-124



455-125

MATERIALS: Steel, black paint
WORKING LOAD LIMIT: 6 000 lb
BREAKING STRENGTH: 18 000 lb

455-125



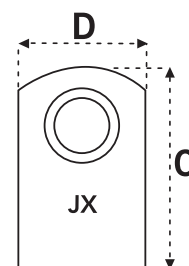
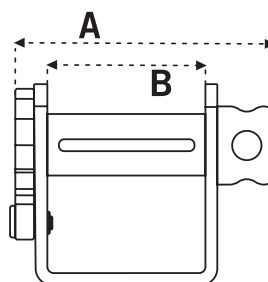
455-126

MATERIALS: Galvanized steel
WORKING LOAD LIMIT: 6 000 lb
BREAKING STRENGTH: 18 000 lb

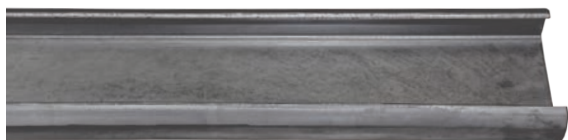
455-126



PART	A	B	C	D	BOX
455-123	8.11"	4.88"	6.10"	3.94"	5 un.
455-124	8.11"	4.88"	6.10"	3.94"	5 un.
455-125	8.11"	4.88"	7.48"	3.94"	5 un.
455-126	8.11"	4.88"	7.48"	3.94"	5 un.



TRACKS



456-106

456-106

DIMENSIONS: 6'

MATERIALS: Plain steel



456-151

456-151

DIMENSIONS: 6'

MATERIALS: Aluminum

BARS



456-201

456-201

DIMENSIONS: 35"

MATERIALS: Steel, black paint



456-203

456-203

DIMENSIONS: 35"

MATERIALS: Chrome finish steel

CORNER PROTECTORS



459-101

459-101

DIMENSIONS: 6-1/2" x 5-1/2" x 2-3/4"

DETAILS: For cable, chain and 1-3/4" to 2" strap

MATERIALS: Zinc plated steel



459-121

459-121

DIMENSIONS: 6" x 5-3/8" x 4-1/2"

DETAILS: For 2" to 4" strap

MATERIALS: Plastic



459-131

459-131

DIMENSIONS: 11-3/4" x 4-1/2" x 2-3/4"

DETAILS: For 2" to 4" strap

MATERIALS: Plastic

JIMEXS

HARDWARE

BRAND NEW
PRODUCTS



BRAND NEW TRAILER PARTS AND ACCESSORIES!

Jimexs Hardware offers a full series of trailer parts and accessories covering all your needs. Drive safely with reliable parts meeting SAE standards. Whether it's hitch balls, couplers, jacks or safety accessories, we have everything you need!

JIMEXS-HARDWARE.COM

LOGISTIC STRAPS



453-101

453-101

E Series

DIMENSIONS: 2" x 12'

FIXED PART: 48"

DETAILS: Wide handle ratchet

MATERIALS: Polyester and steel gold zinc

WORKING LOAD LIMIT: 1 000 lb

BREAKING STRENGTH: 3 000 lb



453-103

453-103

E Series

DIMENSIONS: 2" x 16'

FIXED PART: 48"

DETAILS: Wide handle ratchet

MATERIALS: Polyester and steel gold zinc

WORKING LOAD LIMIT: 1 000 lb

BREAKING STRENGTH: 3 000 lb



453-105

453-105

E Series

DIMENSIONS: 2" x 20'

FIXED PART: 48"

DETAILS: Wide handle ratchet

MATERIALS: Polyester and steel gold zinc

WORKING LOAD LIMIT: 1 000 lb

BREAKING STRENGTH: 3 000 lb



453-133

453-133

F Series

DIMENSIONS: 2" x 16'

FIXED PART: 49"

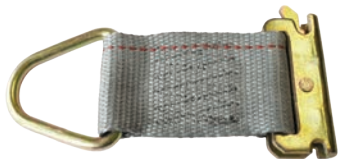
DETAILS: Wide handle ratchet

MATERIALS: Polyester and steel gold zinc

WORKING LOAD LIMIT: 670 lb

BREAKING STRENGTH: 2 000 lb

ROPE TIE OFFS



454-101

454-101

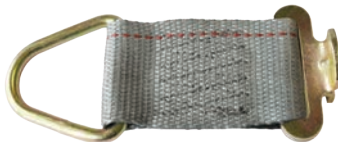
E Series

DIMENSIONS: 2" x 6"

MATERIALS: Polyester and steel gold zinc

WORKING LOAD LIMIT: 833 lb

BREAKING STRENGTH: 2 500 lb



454-121

454-121

F Series

DIMENSIONS: 2" x 6"

MATERIALS: Polyester and steel gold zinc

WORKING LOAD LIMIT: 670 lb

BREAKING STRENGTH: 2 000 lb



454-301

454-301

L Series

DIMENSIONS: 2" x 2"

MATERIALS: Steel and aluminum

WORKING LOAD LIMIT: 1 000 lb

BREAKING STRENGTH: 3 000 lb

LOGISTIC TRACKS

460-101 E Series

DIMENSIONS: 10'
DETAILS: 12 Gauge
MATERIALS: Galvanized steel

460-201 F Series

DIMENSIONS: 10', 1" notched holes
DETAILS: 12 Gauge
MATERIALS: Galvanized steel

460-206 F Series

DIMENSIONS: 10', 1" holes
DETAILS: 15 Gauge
MATERIALS: Galvanized steel

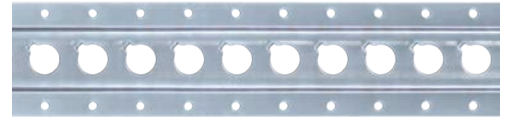
460-301 L Series

DIMENSIONS: 100"
DETAILS: 15 Gauge
MATERIALS: Aluminum

460-101



460-201



460-206



460-301



DECKING BEAMS

461-151 E Series

DIMENSIONS: Adjustable from 90.5" to 102"
DECKING: 3 000 lb
SHORING: 2 500 lb
MATERIALS: Heavy duty aluminum

461-151



SHORING BARS

462-106

DIMENSIONS: Adjustable from 90" to 105"
MECHANISM: Adjustment lever
DETAILS: Anti-skid pivot square feet
MATERIALS: Aluminum and rubber

462-106



462-211 F Series

DIMENSIONS: Adjustable from 92" to 106"
MECHANISM: Push button
DETAILS: For 1" hole
MATERIALS: Steel
WORKING LOAD LIMIT: 500 lb

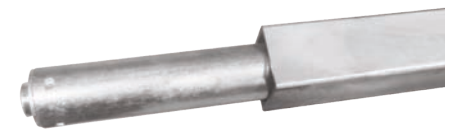
462-211



462-311 F Series

DIMENSIONS: Adjustable from 94" to 108"
MECHANISM: Push button
DETAILS: For 1" hole
MATERIALS: Steel
WORKING LOAD LIMIT: 1 000 lb

462-311



BUCKETS



PART	DIMENSIONS	GRADE	WORKING LOAD LIMIT	BREAKING STRENGTH
413-291	1/4" x 65'	G70	3 150 lb	12 600 lb
413-293	5/16" x 50'	G70	4 700 lb	18 800 lb
413-295	3/8" x 45'	G70	6 600 lb	26 400 lb

MATERIALS: Gold zinc plated steel

BARRELS



PART	DIMENSIONS	GRADE	WORKING LOAD LIMIT	BREAKING STRENGTH
413-391	1/4" x 800'	G70	3 150 lb	12 600 lb
413-393	5/16" x 550'	G70	4 700 lb	18 800 lb
413-395	3/8" x 400'	G70	6 600 lb	26 400 lb

MATERIALS: Gold zinc plated steel

ASSEMBLIES WITH HOOKS



PART	DIMENSIONS	HOOKS	WORKING LOAD LIMIT	BREAKING STRENGTH
413-513	5/16" x 20'	2 x 413-203	4 700 lb	18 800 lb
413-515	3/8" x 20'	2 x 413-205	6 600 lb	26 400 lb

MATERIALS: Gold zinc plated steel

GRADE: Grade 70 chain and hooks

* Hooks on page 11

CHAIN BINDERS



PART	DIMENSIONS & GRADE	MECHANISM	WORKING LOAD LIMIT	BREAKING STRENGTH
459-501	G70, up to 5/16" G43, up to 3/8"	Lever load	5 400 lb	19 000 lb
459-521	G70, up to 5/16" G43, up to 3/8"	Ratchet load	5 400 lb	19 000 lb
459-561	G70, up to 3/8" G43, up to 1/2"	Ratchet load	9 200 lb	32 200 lb

MATERIALS: Forged steel, red paint

459-581	G70, up to 5/16"	Ratchet load, adjustable range 12"	5 400 lb	19 000 lb
---------	------------------	---------------------------------------	----------	-----------

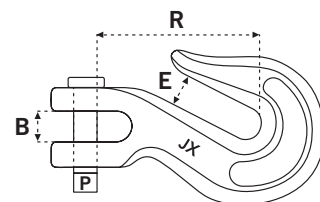
MATERIALS: Steel

CLEVIS HOOKS

PART	DIMENSIONS	B	E	P	R	WORKING LOAD LIMIT	BREAKING STRENGTH	BOX
413-201	1/4"	0.36"	0.39"	0.31"	1.97"	3 580 lb	10 740 lb	100 un.
413-203	5/16"	0.40"	0.44"	0.45"	2.21"	5 390 lb	16 170 lb	50 un.
413-205	3/8"	0.47"	0.50"	0.47"	2.63"	7 480 lb	22 440 lb	40 un.
413-209	1/2"	0.66"	0.66"	0.63"	3.29"	12 710 lb	38 130 lb	20 un.

MATERIALS: Gold zinc plated forged steel

GRADE: G70

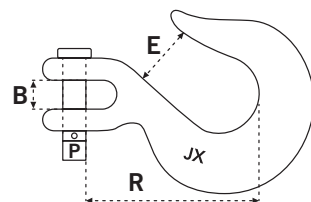


SLIPPING HOOKS

PART	DIMENSIONS	B	E	P	R	WORKING LOAD LIMIT	BREAKING STRENGTH	BOX
413-211	1/4"	0.43"	0.94"	0.37"	2.61"	2 750 lb	8 250 lb	80 un.
413-213	5/16"	0.50"	1.06"	0.43"	2.88"	4 290 lb	12 870 lb	50 un.
413-215	3/8"	0.57"	1.31"	0.47"	3.31"	5 230 lb	15 690 lb	30 un.
413-219	1/2"	0.76"	1.70"	0.67"	4.00"	8 975 lb	26 920 lb	15 un.

MATERIALS: Gold zinc plated forged steel

GRADE: G70

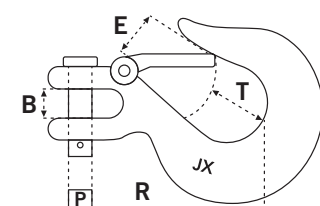


SLIPPING HOOKS WITH LATCH

PART	DIMENSIONS	B	E	P	R	T	WORKING LOAD LIMIT	BREAKING STRENGTH	BOX
413-221	1/4"	0.43"	0.79"	0.37"	2.61"	0.87"	2 750 lb	8 250 lb	80 un.
413-223	5/16"	0.50"	0.93"	0.43"	2.88"	0.87"	4 290 lb	12 870 lb	50 un.
413-225	3/8"	0.57"	1.14"	0.47"	3.31"	1.02"	5 230 lb	15 690 lb	30 un.
413-229	1/2"	0.76"	1.42"	0.67"	4.00"	1.38"	8 975 lb	26 925 lb	15 un.

MATERIALS: Gold zinc plated forged steel

GRADE: G70



BOLT-ON TIE DOWNS



410-021

DIMENSIONS: 2-5/8" x 1-3/4"
INSIDE OF RING: 1-1/8" x 1-1/2"
HOLES: 3/8"
MOUNTING: Surface
MATERIALS: Stainless steel
WORKING LOAD LIMIT: 400 lb
BREAKING STRENGTH: 1 200 lb



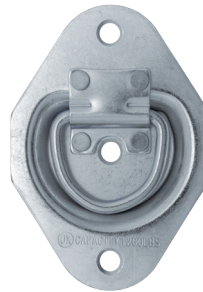
410-031

DIMENSIONS: 2-3/8" x 1-3/8"
INSIDE OF RING: 1-1/8" x 1"
HOLES: 9/32"
MOUNTING: Surface
MATERIALS: Zinc plated steel



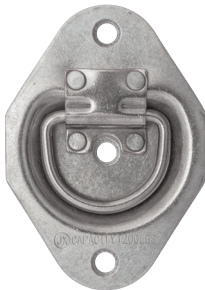
410-091

DIMENSIONS: 4"
INSIDE OF RING: 1-1/2" x 2"
HOLES: 1/4"
MOUNTING: Surface
MATERIALS: Zinc plated steel and plastic
WORKING LOAD LIMIT: 1 200 lb
BREAKING STRENGTH: 3 600 lb



410-101

DIMENSIONS: 5" x 3-1/2"
INSIDE OF RING: 1-1/8" x 1-3/4"
HOLES: 9/32"
MOUNTING: Recessed
MATERIALS: Zinc plated steel
WORKING LOAD LIMIT: 1 200 lb
BREAKING STRENGTH: 3 600 lb



410-106

DIMENSIONS: 5" x 3-1/2"
INSIDE OF RING: 1-1/8" x 1-3/4"
HOLES: 9/32"
MOUNTING: Recessed
MATERIALS: Stainless steel
WORKING LOAD LIMIT: 1 200 lb
BREAKING STRENGTH: 3 600 lb



410-111

DIMENSIONS: 3-3/4" x 4"
INSIDE OF RING: 1-3/8"
HOLES: 15/32"
MOUNTING: Recessed
MATERIALS: Zinc plated steel
WORKING LOAD LIMIT: 2 000 lb
BREAKING STRENGTH: 6 000 lb



410-121

DIMENSIONS: 4-1/2" x 4-3/4"
INSIDE OF RING: 1-11/32"
HOLES: 13/32"
MOUNTING: Recessed
MATERIALS: Zinc plated steel
WORKING LOAD LIMIT: 5 000 lb
BREAKING STRENGTH: 15 000 lb



410-131

DIMENSIONS: 6"
INSIDE OF RING: 1-1/4" x 3-1/8"
HOLES: 11/32"
MOUNTING: Recessed
MATERIALS: Zinc plated steel
WORKING LOAD LIMIT: 6 000 lb
BREAKING STRENGTH: 18 000 lb

BOLT-ON TIE DOWNS

410-201

DIMENSIONS: 3-3/8" x 3-1/2"
INSIDE OF RING: 2-1/2" x 2-1/4"
HOLES: 13/32"
MOUNTING: Surface
MATERIALS: Zinc plated steel
WORKING LOAD LIMIT: 3 666 lb
BREAKING STRENGTH: 11 000 lb



410-202

DIMENSIONS: 3-3/8" x 3-1/2"
INSIDE OF RING: 2-1/2" x 2-1/4"
HOLES: 13/32"
MOUNTING: Surface
MATERIALS: Plain steel
WORKING LOAD LIMIT: 3 666 lb
BREAKING STRENGTH: 11 000 lb



WELD-ON TIE DOWNS

410-203

DIMENSIONS: 3-3/8" x 3-1/2"
INSIDE OF RING: 2-1/2" x 2-1/4"
MATERIALS: Plain steel
WORKING LOAD LIMIT: 3 666 lb
BREAKING STRENGTH: 11 000 lb



410-205

DIMENSIONS: 4-1/4" x 4-1/4"
INSIDE OF RING: 3" x 3"
MATERIALS: Plain steel
WORKING LOAD LIMIT: 6 000 lb
BREAKING STRENGTH: 18 000 lb



410-207

DIMENSIONS: 4-1/2" x 4-1/2"
INSIDE OF RING: 3" x 3"
MATERIALS: Plain steel
WORKING LOAD LIMIT: 8 833 lb
BREAKING STRENGTH: 26 500 lb



410-211

DIMENSIONS: 5" x 6"
INSIDE OF RING: 4" x 3"
MATERIALS: Plain steel
WORKING LOAD LIMIT: 15 586 lb
BREAKING STRENGTH: 46 760 lb



410-213

DIMENSIONS: 5" x 6-1/4"
DETAILS: Bent ring
INSIDE OF RING: 3-5/8" x 3"
MATERIALS: Plain steel
WORKING LOAD LIMIT: 15 333 lb
BREAKING STRENGTH: 46 000 lb



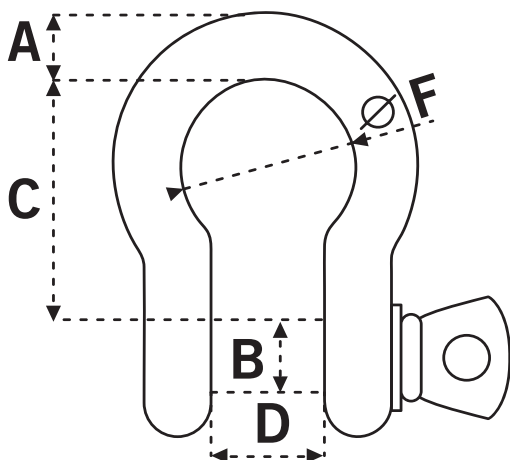
NON-RATED SCREW PIN SHACKLES



NON-RATED

PART	DIMENSIONS	WORKING LOAD LIMIT	BREAKING STRENGTH	BOX
414-501	3/16"	725 lb	2 175 lb	750 un.
414-503	1/4"	1 100 lb	3 300 lb	500 un.
414-505	5/16"	1 650 lb	4 950 lb	400 un.
414-507	3/8"	2 200 lb	6 600 lb	200 un.
414-509	7/16"	3 300 lb	9 900 lb	150 un.
414-511	1/2"	4 400 lb	13 200 lb	80 un.
414-513	5/8"	7 150 lb	21 450 lb	40 un.
414-515	3/4"	10 450 lb	31 350 lb	25 un.
414-517	7/8"	14 300 lb	42 900 lb	15 un.
414-519	1"	18 700 lb	56 100 lb	10 un.

MATERIALS: Galvanized steel



PART	A	B	C	D	F
414-501	0.22"	0.25"	0.85"	0.36"	0.56"
414-503	0.25"	0.31"	1.13"	0.47"	0.78"
414-505	0.31"	0.38"	1.22"	0.53"	0.84"
414-507	0.38"	0.44"	1.44"	0.66"	1.03"
414-509	0.44"	0.50"	1.69"	0.75"	1.16"
414-511	0.50"	0.63"	1.88"	0.81"	1.31"
414-513	0.69"	0.75"	2.38"	1.06"	1.69"
414-515	0.81"	0.88"	2.81"	1.25"	2.00"
414-517	0.97"	1.00"	3.31"	1.44"	2.28"
414-519	1.06"	1.13"	3.76"	1.69"	2.70"

RATED SCREW PIN SHACKLES

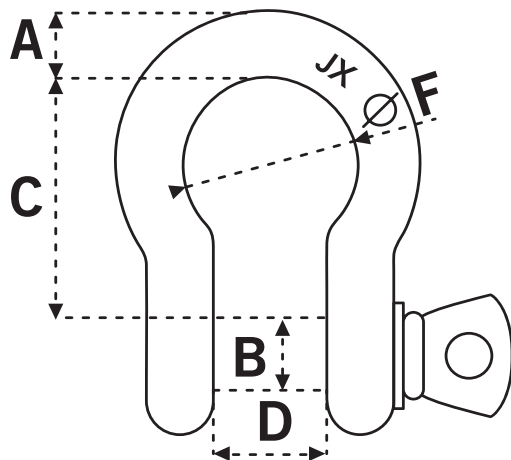
PART	DIMENSIONS	WORKING LOAD LIMIT	BREAKING STRENGTH	BOX
414-521	3/16"	725 lb	2 175 lb	750 un.
414-523	1/4"	1 100 lb	3 300 lb	500 un.
414-525	5/16"	1 650 lb	4 950 lb	400 un.
414-527	3/8"	2 200 lb	6 600 lb	200 un.
414-529	7/16"	3 300 lb	9 900 lb	150 un.
414-531	1/2"	4 400 lb	13 200 lb	80 un.
414-533	5/8"	7 150 lb	21 450 lb	40 un.
414-535	3/4"	10 450 lb	31 350 lb	25 un.
414-537	7/8"	14 300 lb	42 900 lb	15 un.
414-539	1"	18 700 lb	56 100 lb	10 un.

MATERIALS: Galvanized steel

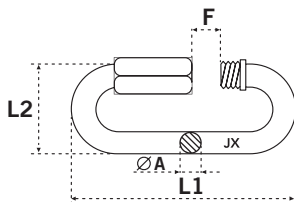


RATED

PART	A	B	C	D	F
414-521	0.22"	0.25"	0.85"	0.36"	0.56"
414-523	0.25"	0.31"	1.13"	0.47"	0.78"
414-525	0.31"	0.38"	1.22"	0.53"	0.84"
414-527	0.38"	0.44"	1.44"	0.66"	1.03"
414-529	0.44"	0.50"	1.69"	0.75"	1.16"
414-531	0.50"	0.63"	1.88"	0.81"	1.31"
414-533	0.69"	0.75"	2.38"	1.06"	1.69"
414-535	0.81"	0.88"	2.81"	1.25"	2.00"
414-537	0.97"	1.00"	3.31"	1.44"	2.28"
414-539	1.06"	1.13"	3.76"	1.69"	2.70"

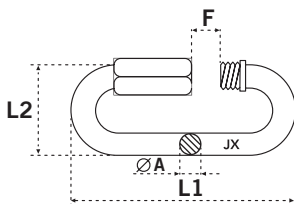


QUICK LINKS



PART	DIMENSIONS	A	L1	L2	F	WORKING LOAD LIMIT	BREAKING STRENGTH	BOX
413-421	1/8"	0.14"	1.85"	0.67"	0.39"	175 lb	520 lb	2 000 un.
413-423	3/16"	0.20"	2.44"	0.91"	0.55"	650 lb	1 950 lb	1 000 un.
413-425	1/4"	0.24"	2.84"	1.04"	0.63"	875 lb	2 625 lb	500 un.
413-427	5/16"	0.32"	3.54"	1.32"	0.71"	1 525 lb	3 050 lb	400 un.
413-429	3/8"	0.39"	4.13"	1.59"	0.79"	2 300 lb	6 900 lb	200 un.
413-433	1/2"	0.47"	4.80"	1.87"	0.91"	2 500 lb	7 500 lb	100 un.

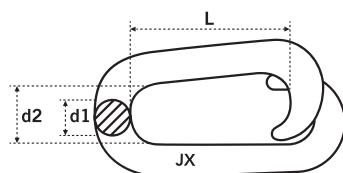
MATERIALS: Zinc plated steel



PART	DIMENSIONS	A	L1	L2	F	WORKING LOAD LIMIT	BREAKING STRENGTH	BOX
413-435	1/8"	0.14"	1.85"	0.67"	0.39"	175 lb	520 lb	1 000 un.
413-437	3/16"	0.20"	2.44"	0.91"	0.55"	650 lb	1 950 lb	1 000 un.
413-439	1/4"	0.24"	2.84"	1.04"	0.63"	875 lb	2 625 lb	500 un.
413-441	5/16"	0.32"	3.54"	1.32"	0.71"	1 525 lb	3 050 lb	250 un.
413-443	3/8"	0.39"	4.13"	1.59"	0.79"	2 300 lb	6 900 lb	200 un.
413-445	1/2"	0.47"	4.80"	1.87"	0.91"	2 500 lb	7 500 lb	100 un.

MATERIALS: Stainless steel

LAP LINKS



PART	DIMENSIONS	D1	D2	L	BOX
413-400	3/16" x 1"	0.20"	0.39"	0.91"	1 000 un.
413-401	1/4" x 1-1/2"	0.24"	0.43"	1.14"	700 un.
413-403	5-16" x 1-1/2"	0.32"	0.59"	1.46"	250 un.
413-405	3/8" x 2"	0.39"	0.67"	1.46"	200 un.
413-409	1/2" x 2-1/2"	0.47"	0.91"	2.52"	100 un.

MATERIALS: Zinc plated steel

FOOTMAN LOOPS

410-401

DIMENSIONS: 2.67" (2.13" CC)

HOLES: 0.21"

MATERIALS: Zinc plated steel

410-405

DIMENSIONS: 3.17" (2.63" CC)

HOLES: 0.25"

MATERIALS: Zinc plated steel

410-407

DIMENSIONS: 3.64" (3.09 CC)

HOLES: 0.25"

MATERIALS: Zinc plated steel

410-401



410-405



410-407



HOOKS

410-301

DIMENSIONS: 3" x 0.63"

MATERIALS: Plain steel

410-306

DIMENSIONS: 3" x 0.63"

HOLES: 0.25"

MATERIALS: Zinc plated steel

410-321

DIMENSIONS: 2.30" x 1.5"

HOLES: 0.20"

MATERIALS: Zinc plated steel



410-301



410-306



410-321

TARP TIES

PART	DIMENSIONS	WORKING LOAD LIMIT
465-109	9"	50 lb
465-115	15"	50 lb
465-121	21"	50 lb
465-131	31"	50 lb
465-141	41"	50 lb

MATERIALS: Rubber and zinc plated steel

* Sold in pack of 10 units / Box of 50 units

** This product is not designed to secure a load in place



CARGO CONTROL PRODUCTS

It is the customer's responsibility to evaluate the suitability of any Jimexs Cargo products for their application. Inappropriate use may result in a failure of your cargo control system. Failure of the system can result in property damages, injuries or death.

- All products in this catalog are intended for securing the cargo, excepting tarp ties. These products should not be used for lifting loads.

- All Jimexs Cargo products must be used in accordance with the regulations for their use.

WORKING LOAD LIMIT INFORMATION

Working load limit (WLL) shown in this catalog is intended to help the customers decision for his product selection and to have a docking system suitable for its application. Overweight to the equipment may cause a failure in the cargo control application.

It is important to note the following information when evaluating the maximum workload :

- All working load ratings apply to new products. Workload can be greatly reduced with age, wear or damage to the product. It is recommended to inspect all products before use.

- The direction of a load that is not linear at its point of attachment may reduce the capacity of the workload. All product capacities are based on straight line with the fasteners.

- The working load limit is always based on the product weakest point.

- Jimexs Cargo products must be fixed to securing points having a capacity equivalent or greater than the working load limit of the product used.

- Never load beyond the specified working load capacity of your cargo control product.

NOTE: *Working Loads Limits in this catalog have been set at 1/3 of the product breaking strength.*

TIGHTENING OF THE CARGO CONTROL EQUIPMENT

Do not use non-specific equipment such as a lever or extension because the force that can be generated by the breaking of a part under pressure is sufficient to cause serious injuries or death.

UTILITY AND LOGISTIC STRAPS

The straps must always be protected when used on abrasive or sharp objects. It is important to inspect the straps before each use and never use a broken, worn or damaged strap. If it is the case, the replacement must be immediate. For straps with fittings (A, E and F Series), the working load limit is reduced when the fittings are not completely secured.

WINCHES, WINCH BARS

Always hold the winch bar firmly and never release it without making sure that the winch latch is secured in the mechanism. If it is not secure properly, it may result in property damages, personal injuries or death.

It is important to maintain a safe distance from the bar to prevent accidental injuries. The bar must be secured in both holes of the mechanism to prevent it from slipping out of the mechanism or an overload resulting in its breaking.

Do not use the winches to pull or lift a load.

When installing the winch, it is recommended to keep a minimum of 12" of strap in the winding system and two turns of mandrel.

LOGISTIC TRACKS

Toxic gases may emanate from the logistic tracks when welded as they are made of galvanized steel. It is recommended to do the welding work in a place with adequate ventilation.

DECKING BARS

Do not overload the bars and avoid creating a center of gravity too high as this may lead to an unbalanced trailer.

DECKING BEAMS (E SERIES)

The working load limit is reduced when the fittings are not completely secured. Do not overload the bars and avoid creating a center of gravity too high as this may lead to an unbalanced trailer.

SHORING BARS (F SERIES)

Do not use these bars for decking your cargo as this may result in failure of your cargo control system. When using shoring bars vertically, the spring end must be positioned upwards. The work load capacity is reduced when the fittings are not completely secured.

JACK BARS (ADJUSTMENT LEVER)

Do not retain a moving cargo (e.g., on wheels) with this bar. This type of load exerts an increased force on this type of bar during the movements and can cause the bars to fail. An excessive force on the bar can also damage the trailer sidewalls.

CHAINS

Never over load a chain binder or a chain. The force generated by the breaking of one of these parts can cause serious injuries or death.

J-BOXS



**YOUR EQUIPMENT
DRY AND SECURE !**

JBOXS.COM

NOTES



Tel 450 396-7771 | 1 866 447-5656
Fax 450 396-7772 | 1 866 447-5625

JIMEXSCARGO.COM

867, boulevard Jean-Paul-Vincent, Longueuil (Québec), Canada J4G 1R3