

050-0100 Two-Rotor Latch



This versatile 2-rotor latch is designed for medium to heavy-duty applications for on or off highway entrance doors, compartments and access panels. It features a variety of trip levers and mounting axles for ease of mounting and applications and is FMVSS 206 compliant.

Designed For:

- Medium to heavy weight doors for on or off-highway applications
- Door thicknesses of 1-7/8" (47.6mm) or greater
- Door weights of 50-200 lbs. (23-91 kg)
- Door seal pressures of 50-150 lbs. (23-68 kg) (suggested for best results)



www.trimarkcorp.com

TriMark Corporation

500 Bailey Avenue
P.O. Box 350
New Hampton, Iowa 50659
United States
Tel: 641-394-3188
Fax: 641-394-2392
1-800-447-0343
www.trimarkcorp.com



TriMark Europe

Cedar Court
Walker Road
Bardon Hill
Coalville LE67 1TU
United Kingdom
Tel: +55 (0)1530 512460
Fax: +44(0)1530 512461
www.trimarkeu.com



Available:

- In left or right hand configurations (right hand shown)
- With (4) 1/4-20 UNC or M6 X 1 threaded axles
- With trip lever options
- Straddle mount option

Material:

- Internal latch components: Heat treated, smooth edge stamped steel
- Case halves: High strength steel
- Springs: Non-corrosive stainless steel

Finish:

- Zinc plated, clear chromate steel components

Installation:

- Four 1/4-20 UNC grade 5 or M6 X 1 class 8.8 or better fasteners are required (not included). Tighten to the fastener manufacturers' recommended torque value, however, do not exceed 120 in-lbs (13.3 N-m)
- Fastener mounting holes diameter should not exceed .281 (7.1mm)

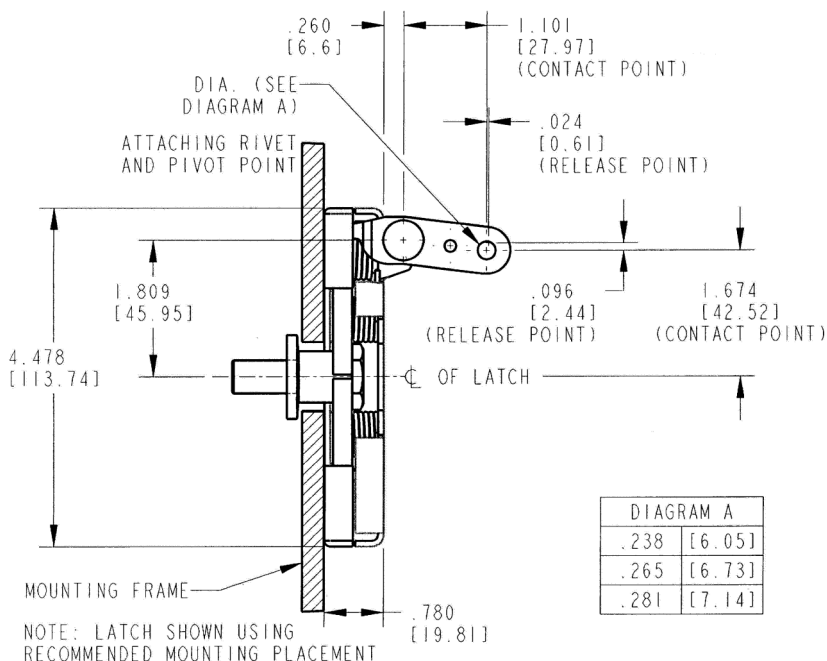
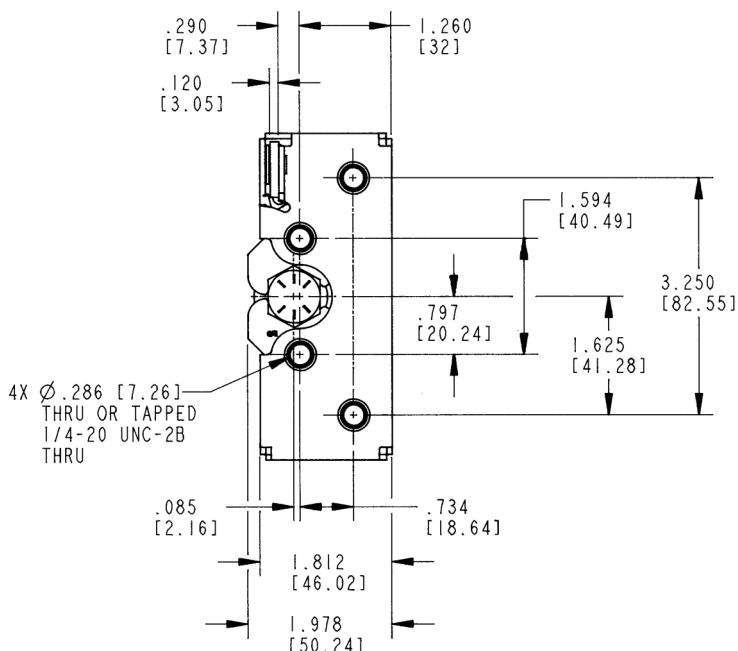
Internal Lubrication:

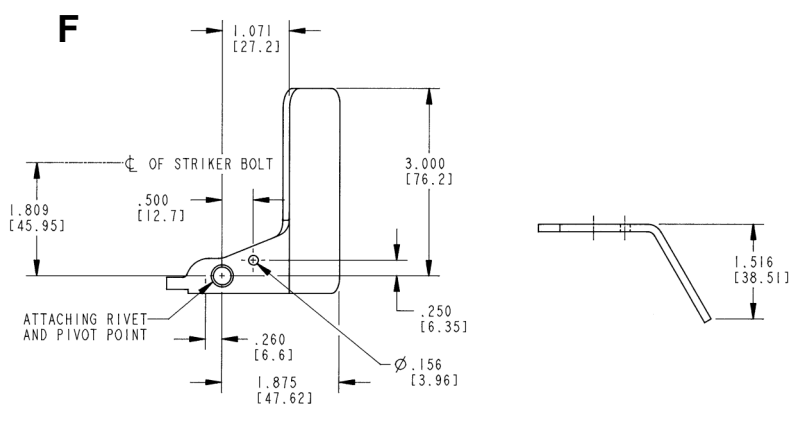
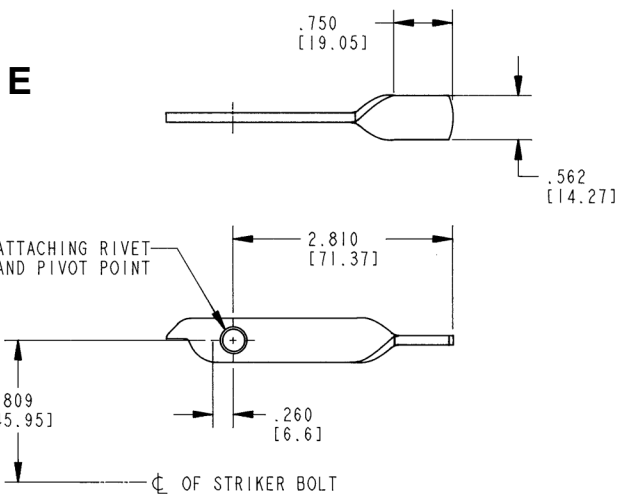
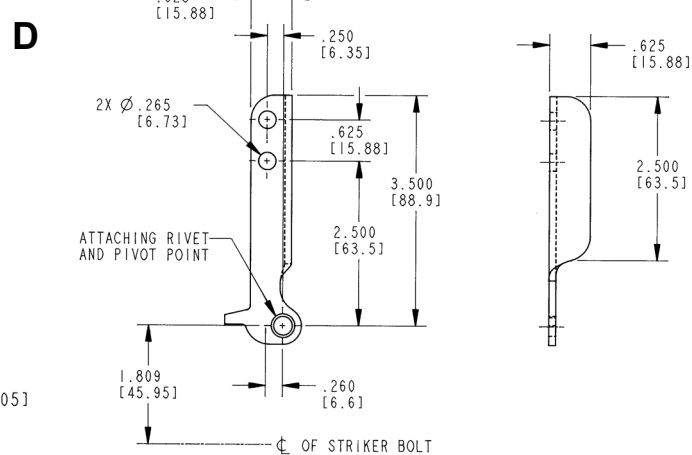
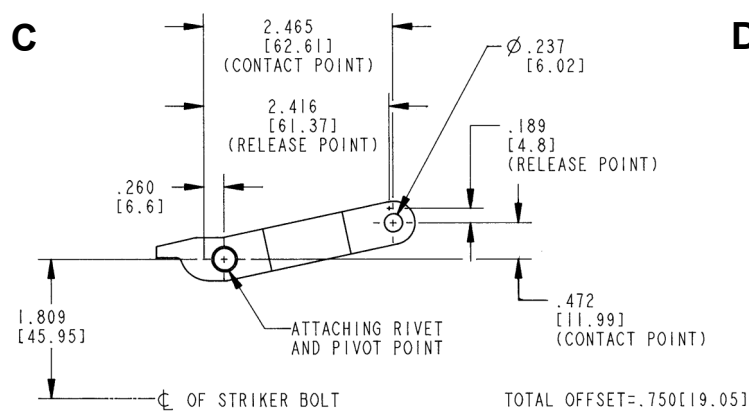
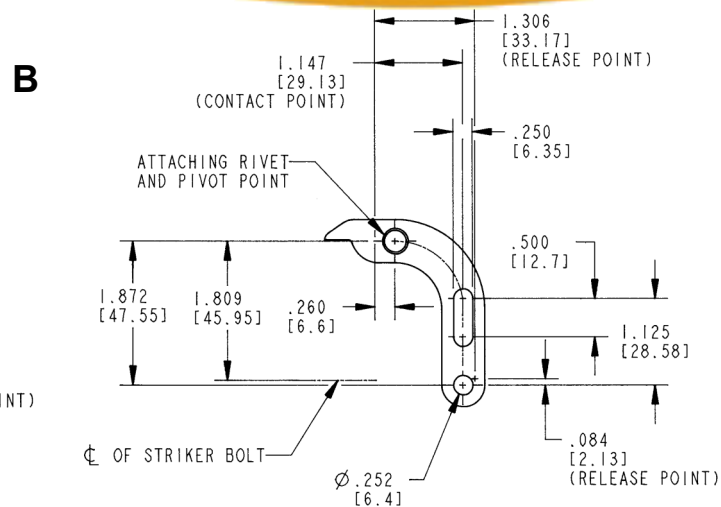
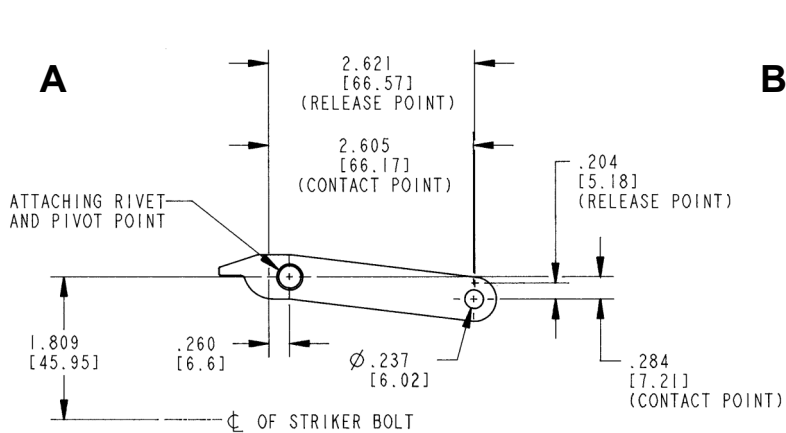
- Oven-cured dry lubricant is applied at factory on all critical moving parts

Two position, double rotor latches comply with FMVSS 206 in primary and secondary latching positions when installed as shown below and tested with approved TriMark FMVSS 206 compliant striker bolts in accordance with SAE J839.

Individual part dimensions are for reference only. Refer to individual part drawings for complete dimensions, specifications, and installation procedures. Engineering assistance and application drawings are available.

For more information visit:
www.trimarkcorp.com





THE TRIP LEVERS ABOVE REPRESENT SIX TYPICALLY SUPPLIED OPTIONS.
MANY MORE TRIP LEVER GEOMETRIES ARE AVAILABLE -- PLEASE INQUIRE.