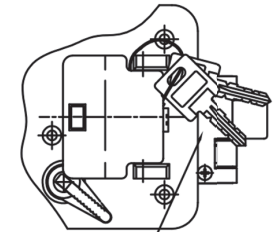
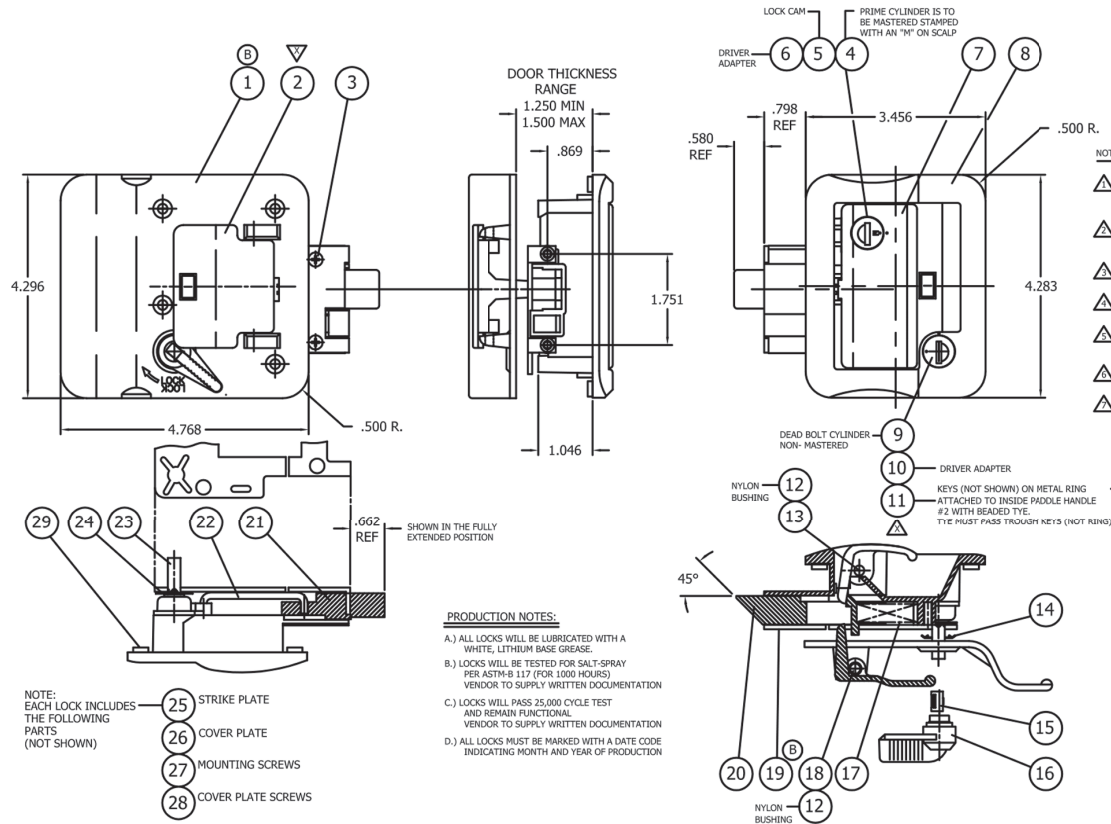


# TECHNICAL DRAWING / DESSIN TECHNIQUE



| QTY | DESCRIPTION           | MATERIAL | REF. / NOTE           |
|-----|-----------------------|----------|-----------------------|
| 29  | GASKET                | EPDM     | REF: NOTE-7           |
| 28  | 2 FLAT HD M.S.        | STD/H/T  | #8-32x.375 PPHMSZ     |
| 27  | 4 OVAL HD M.S.        | STD/H/T  | #8-32x.750 PPHMSZ     |
| 26  | 1 COVER PLATE         | STEEL    | ZINC PLATED           |
| 25  | 1 STRIKE PLATE        | STEEL    | ZINC PLATED           |
| 24  | 1 WAVE WASHER         | STEEL    | BLACK NIOS (TEMPERED) |
| 23  | 1 DEADBOLT STEM       | ZDC-3    |                       |
| 22  | 1 LINK ARM            | STEEL    | NICKEL PLATED         |
| 21  | 1 PLUNGER (DRIBBLET)  | ZDC-3    |                       |
| 20  | 1 PLUNGER (PADDLE)    | ZDC-3    |                       |
| 18  | 1 AXLE                | STEEL    | NICKEL PLATED         |
| 17  | 1 SPRING              | STEEL    | NICKEL PLATED         |
| 16  | 1 KNOB                | ABS      | MOLDED (RED)          |
| 15  | 1 BUSHING (KNOB)      | ABS      | MOLDED (RED)          |
| 14  | 1 TOOTHED WASHER      | STEEL    | BLACK NIOS (TEMPERED) |
| 13  | 2 AXLE                | STEEL    | NICKEL PLATED         |
| 12  | 4 BUSHING             | NYLON    | MOLDED (WHITE)        |
| 11  | 2 KEY                 | BRASS    | NICKEL PLATED         |
| 10  | 1 DRIVER ADAPTER      | ZDC-3    |                       |
| 9   | 1 CYLINDER (DEADBOLT) | PURCH    | EURO LOCK             |
| 8   | 1 BODY                | ZDC-3    |                       |
| 7   | 1 EXTERIOR PADDLE     | ZDC-3    |                       |
| 6   | 1 DRIVER ADAPTER      | ZDC-3    |                       |
| 5   | 1 LOCK CAM            | ZDC-3    |                       |
| 4   | 1 CYLINDER (PRIME)    | PURCH    | EURO LOCK             |
| 3   | 4 FLAT HD M.S.        | STD      | #8-32x.300 PPHMSZ     |
| 2   | 1 INSIDE PADDLE       | ZDC-3    |                       |
| 1   | 1 INSIDE WAVY PLATE   | ZDC-3    | OPTIONAL MATL.=STEEL  |

# JIMEXS HARDWARE

1 866 447-5656 / INFO@JIMEXS.COM

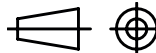
WWW.JIMEXS-HARDWARE.COM

225-851

Paddle handle  
Serrure à palette

2022-01-05

PROJECTIONS



DIMENSIONS  
COLOR / COULEUR  
SPECIFICATIONS / SPÉCIFICATIONS

3.47" x 4.28"  
Chrome  
Locking / Verrouillable