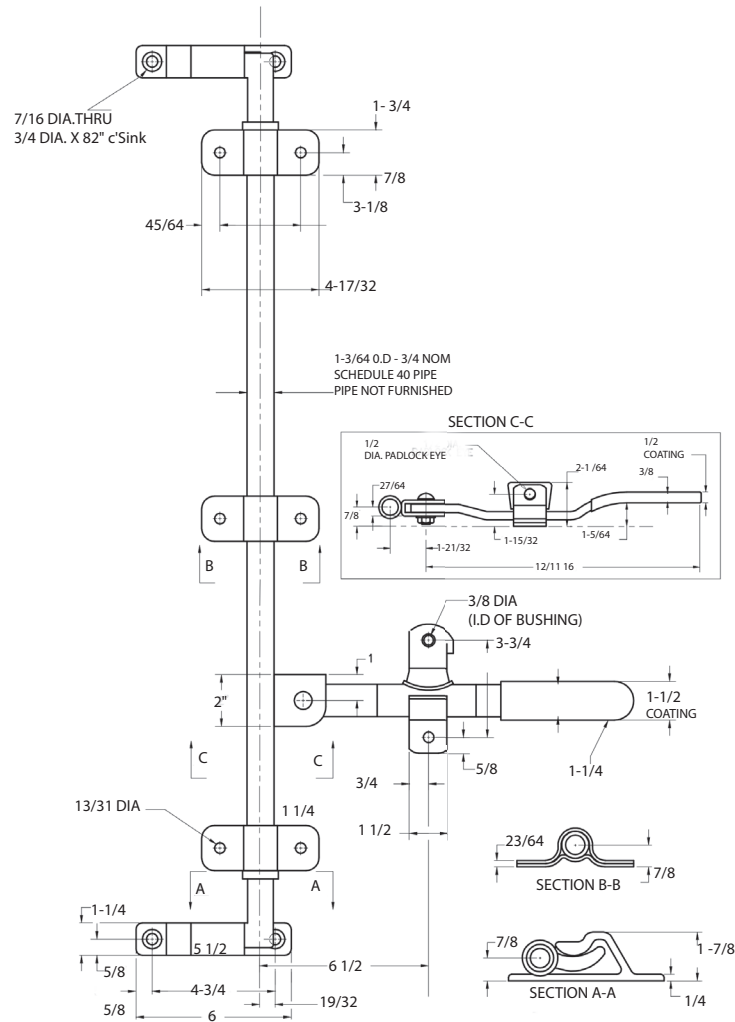


# TECHNICAL DRAWING / DESSIN TECHNIQUE



**JIMEXS**  
**HARDWARE**

1 866 447-5656 / INFO@JIMEXS.COM

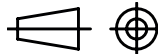
WWW.JIMEXS-HARDWARE.COM

222-585

Bar lock  
Serrure à compression

2022-01-04

PROJECTIONS



SPECIFICATIONS/ SPÉCIFICATIONS For 3/4 tubing (not included)

/Pour tuyau 3/4 (non inclus)

MATERIAL/MATÉRIEL

Zinc/Zingue